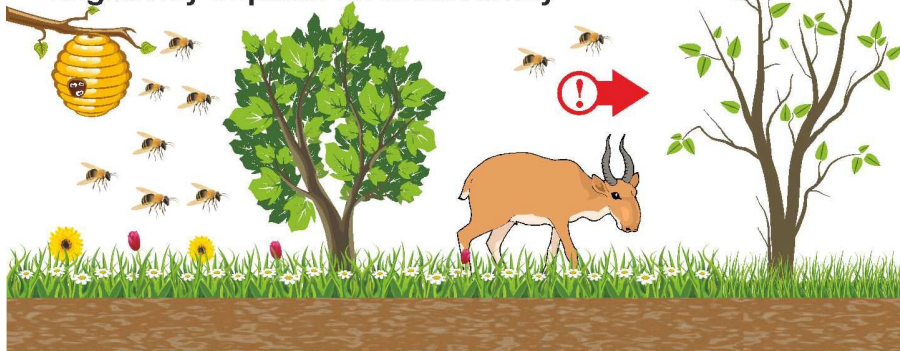


ISSUES

Decrease of wild bees population on the territory of Specially Protected Area (SPA) negatively impacts its biodiversity



Land degradation and accumulation of metsulfuron-methyl (which suppress growth and quality of crops) due to application of chemicals in agriculture



SOLUTION APPROACHES

DEVELOPMENT OF THE BEEKEEPING

Beekeeping trainings and purchase of equipment



Signing the agreements between beekeepers and farmers



Purchase of 6 tons of sweet clover



INTRODUCTION OF SWEET CLOVER ROTATION

Transfer of the seeds to farmers, including those in buffer zone of Naurzum Nature Reserve



Planting of sweet clover



on 580 ha of 5 districts of Kostanay oblast

Seeds collection for further expansion of rotation fields



Sweet clover forage provision

Pollination of plants, including red-listed on territory of SPA

Honey harvesting



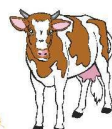
Soil restoration

RESULTS

In 2014 farmers harvested (worth 53 740 000 kzt or 298,500\$):



Allows feed 300 cows for half a year



580 ha of restored lands



Better pollination of 125 species (5 of which is red-listed) in Naurzum Nature Reserve



Higher capacity of Naurzum Nature Reserve in biodiversity conservation

Involved:



171

beekeepers

In 2014 beekeepers harvested honey worth 14 mln. kzt (\$77,800)



Additional information can be requested from PF “Damytu”,
tell: +7 -7142-391091 E-mail: damytu@mail.ru; www.donnik.kz

DEVELOPMENT OF THE BEEKEEPING IN BUFFER ZONES OF SPA

Bees pollinate plants,
including red-listed,
in radius 7-10 km from the hive



A lot of pollinated plants
are the forage for animals,
birds and invertebrates,
including endangered species



Beekeeping is beneficiary
as for nature, so for humans
as additional income



INTRODUCTION OF SWEET CLOVER CROP ROTATION

Sweet clover is a valuable forage culture



Bees pollinate nearby
fields of crops, increasing
its yield on 40%



Sweet clover is a high-capacity honey culture



Harvest of seeds allows
expand sweet clover
crop rotation



SWEET CLOVER RESTORES DEGRADED LAND

Fixates nitrogen in the soil

Enhances the soil fertility

Is a good predecessor for
other agricultural crops

Doesn't need application of
pesticides and other chemicals

It's roots loosen and aerate the soil