

## **SGP COUNTRY PROGRAMME STRATEGY FOR OP6**

### **LIBERIA**

#### **OP6 RESOURCES (1.26 MILLION US\$)**

Core funds	= US\$400,000
STAR funds	:= US\$500,000 Requested
Other Funds to be mobilized:	= US\$250,000
In-kind	= US\$110,000

### **1.0 SGP country programme - summary background**

**1.1** Liberia's Country Programme Strategy (CPS) for Operational Phrase Six (OP6) is prepared to support non-governmental organizations and Community-Based Organizations (CBOs) to build their capacities and provide funds for management of natural resources both within the protected areas and their buffer zones; conservation of environment in productive landscapes; productive uses of renewable energy that are environmentally sound; support innovative demonstrations and capacity building work in sustainable land management practices and other innovative capacity building in cost effective technologies which may lead to the reduction and elimination of Persistent Organic Pollutants (POP).

In addition, the OP-6 strategic programme will seek to reconcile global environmental goals with Poverty Reduction Strategy (PRS) and work towards achieving the Sustainable Development Goals (SDGs) to improve the income generating capacity of the vulnerable population thereby contributing to the PRS and Agenda for Economic Transformation (AEF 2012-2017) efforts of Liberia and utilization of community protected areas within the biological hot-spots outside the gazette forest reserves. As indicated in the OP6 project document, the programme will develop strategy for social inclusion as well.

The programme will further develop indicators to measure progress or success in projects implementation that supports the GEF's strategic goal. The programme will replicate SGP success stories and help to influence policy reforms that are geared towards sustainable environmental management. The programme will integrate poverty reduction as a critical entry point in environmental management and sustainable livelihood and human development. Over the years, the programme has supported over 75 projects and developed the capacities of 85 Civil Society Organizations (CSOs) and community groups.

Since its inception in 2008, Liberia's Global Environment Facility (GEF)-Small Grants Programme (SGP) has successfully gone through two operational phases supporting community level initiatives that promote sustainable economic growth and social development within the GEF focal areas.

**1.2** During the implementation of the OP6, the programme is aligning its operational strategies to the GEF Strategy, UNDP' Strategic Plan and the Sustainable Development Goals, the Liberia's

Agenda for Economic Transformation (2012-2017), and UNFCCC intended nationally determined contributions. This has been done with the view to translating the strategies and plans into community and local level actions. Under OP6 therefore, the SGP will contribute to relevant GEF initiatives and its focal areas.

Significant results and accomplishments achieved by the country programme under OP5

**1.3** During the OP5, the SGP mobilized and disbursed US\$ 2.3 million grants in cash (GEF Core /STAR = US\$ 2.3 million; US\$ 60,000 UNDP CO).

#### MATRIX OF SOURCES FOR CO-FINANCING FUNDS

Fund source	Operational Phase	Total
	OP-5	
GEF Core	1,200,000	1,200,000.00
GEF-GOL-STAR	1,100,000	1,100,000.
UNDP- Liberia	60,000	60,000.00
In-Kind Contribution From NGOs and CBOs	10,000.00	10,000.00
<b>TOTAL</b>		<b>2,300,000</b>

#### Biodiversity conservation

1.4 During OP5, the programme undertook community based conservation activities in Southeast Liberia particularly in the counties of Grand Gedeh and River Gee. In Grand Gedeh county, the local organization Initiative for Peace and Development, was awarded a grant totaling US\$20,000 to undertake a community conservation initiative specifically geared toward providing protection for the Pygmy Hippo and its habitat. This project also took into consideration provision of livelihood for the local communities. In the River Gee, Forest Cry Liberia, another local nature conservation organization was awarded a grant of US\$25,000 to also undertake community-based conservation initiative for Pygmy hippo and habitat protection.

Several consultative meetings were held mainly with women groups across the country. As a result of these meetings, three projects were developed and funded in three counties:

- Grand Gedeh County: Women groups empowered and supported to undertake conservation activities as well as livelihood activities such animal husbandry and bees keeping ;
- Rivercess: In conjunction with the community based biodiversity conservation initiative, a micro-finance scheme was launched to empower women groups to source alternative livelihood;
- Nimba County: In Nimba County particularly in communities within proximity of the East Nimba Nature Reserve, community consultations resulted into the identification of game rate farming, bees keeping and cassava cultivation. These identified activities were fully implemented during GEF OP5.

The bio-geographic focal areas for the OP5 period were the Nimba Nature Reserve, Sapo National Park, Marshall Coastlines , Lake Piso Multiple Use Reserve and the Krahn-Bassa National Forest belt where the Sustainable Village Jatropha and Carbon Offsets Project is based. All these areas are Globally Significant Biodiversity Areas. As indicated below, these areas are made up of the high tropical forest, known globally for harboring endangered species such as Sea Turtles, Pygmy

Hippopotamus, crocodiles, West African Manatee and migratory birds etc. The selected areas have rich ecosystems and many vegetation types, among which are mangroves of the lagoons and estuaries distributed all along the coast, tropical terrestrial high forest, terrestrial semi-deciduous forests and coastal savannah.

## 2.0 ACHIEVEMENTS

In an effort to strengthen current SGP's program and activities in Liberia, the key achievements described below were accomplished with the collective support of UNDP, GEF-SGP National Steering Committee (NSC), Environmental Protection Agency of Liberia (EPA) and Civil Society Organizations (CSOs) involved in the implementation of the program. A lot was achieved, but specific results below are worth mentioning in some level of details:

- Construction of Energy Efficient Eco-stove and Oven: The construction of 500 Eco-stoves helped ease on the mangroves of the Lake Piso basin. The mangrove wood is largely used by fishermen and households in the coastal towns and villages in Cape Mount County (particularly in Robertsport, Tosor, Latia, Sembehun, Sawelor & Tallah) and Grand Bassa County (particularly in Little Bassa & Edina) for smoking fish and for domestic energy. The awareness on the use and protection of mangrove has been embraced by the local people. The use of firewood and charcoal which has largely impacted on the destruction of Liberia's virgin forest has been reduced in communities where the SGP activities were focused.
- Construction of Solar Panel: Lightening of the Foya Boima Hospital with solar panel was to aid in the reduction of the emission of CO<sub>2</sub> and to reduce the high cost in the purchase of diesel fuel for the 35KVA generator operated by the hospital. This was a timely support consistent with SGP thematic area.
- Protection of Mona monkey: Mona monkey (*Cercopithecus mona*) is a rare species of monkeys that need to be protected. This project was undertaken in Kokoyah District, Bong County. The acceptance and support from the community has increased the population of the monkey from 10 to 30 according to recent survey conducted in their habitats. During the implementation of the project, sustainable livelihood implementations were also undertaken in the area.



25.05.2013 group photo of the Equator Prize Award:  
display in a super market: Courtesy-WAIOL

Liberia Pure Honey on

- In 2015, one international recognition (The UNDP Equator Prize) was awarded to one of the SGP supported grantees, West Africa Initiative of Liberia (WAIOL) for Sustainable Livelihood Projects (*see photos on above*).
- SGP support for Farmers in Bong County for the production and marketing of Liberia's Pure Honey and Candle wax. The honey products are on the shelves of Leading Supermarkets in Monrovia international recognition.
- Three Community Forest Management Bodies (CFMBs) were organized in the Lake Piso Multiple Use Reserve by Framers Associated to Conserve the Environment (FACE). The establishment of these community-based governing bodies is intended to build the capacity of local forest communities in the reserve to properly use and manage the remaining forests in their areas with the aim to contribute to Liberia's REDD+ initiatives.
- With the technical support from the Environmental Protection Agency (EPA), the SGP conducted a Capacity Building Training Workshop for SGP's grantees in Gbarnga, Bong County.
- As a result of the Gbarnga Workshop, SGP now has a proposed SGP Grantee Network.
- SGP Liberia has a Technical Working Group (TAG) established.
- SGP continue to support the firewood expansion activities in and around Lake Piso Multiple Use Reserve and the FDA's re-forestation sites in Liberia.
- Provision of Bio Digester to an elementary school in Kponde Town. Development of Sustainable Farm integrated with an Anaerobic Digester in the community of Kponde Town, as a mitigating effort of climate change was piloted.

- Building Women capacity in Biodiversity Conservation. This was done in many communities where the SGP grantees are operating.
- Protecting sea turtles. As a result of the support from SGP, grantees are now networking in protecting sea turtle sites along the Liberian coast.
- Lowland Rice Cultivation: The lowland rice cultivation which has gained grounds in Mehnla is the clear manifestation of sustainable land management. Two hundred and fifty (250) 50-kg bags of seed rice were harvested quarterly and sold to WFP through Gbelaygay Women Association. This harvest takes place four times a year using the NERICA variety of seed rice.
- Provision of livestock to target communities: SGP grantees have provided livestock to communities around protected areas, including community forest dwellers and vulnerable communities. This has helped to ease the tension on the hunting of endangered species in protected areas.
- One ecotourism project was initiated to conserve the Sembehun Sea Turtle Conservation Site.

### 3.0 THE COUNTRY PROGRAMME

#### 3.1 Policy issues:

Liberia's sector policies are yet to be harmonized to ensure proper and clear coordination of environmental programs among stakeholder institutions in the country. There is need for better structured and more systematic engagement of multiple stakeholders in policy dialogue and harmonization of approaches. When sector policies are harmonized, it is expected that the following issues will be effectively addressed to contribute to environmental sustainability:

- Clearly defined responsibilities of sectors and stakeholder institutions in addressing environmental and ecosystem management issues in Liberia. This should result in proper collaboration among those institutions and coordination among the sectors.
- Conditions will be ideally established for mainstreaming gender in development planning and implementation.
- Specifically, much of the SGP innovative technologies known in part or whole can be mainstreamed into development intervention. Such technologies need to be consolidated in ways that will build the capacities of other CSOs to work towards achieving their developmental aspirations including improvement in community livelihoods while providing global environmental benefits.

#### 3.2 Ratification of conventions

Table 1: Conventions and Protocols signed/ratified

Conventions/protocols	Date of ratification/completion
1. UN Convention on Biological Diversity (CBD)	2000
2. CBD National Biodiversity Strategy and Action Plan (NBSAP)	2004
3. UN Framework Convention on Climate Change (UNFCCC)	2002



4. UNFCCC National Communications (1 <sup>st</sup> , 2 <sup>nd</sup> , 3 <sup>rd</sup> )	It started 2006 and ongoing
5. UNFCCC Nationally Appropriate Mitigation Actions (NAMA)	2012
6. UN Convention to Combat Desertification (UNCCD)	1998
7. UNCCD National Action Programmes (NAP)	Finalized 2011
8. Stockholm Convention (SC)	2002
9. SC National Implementation Plan (NIP)	2007
10. World Bank Poverty Reduction Strategy Paper (PRSP)	June, 2008
11. GEF National Capacity Self-Assessment (NCSA)	July, 2006
12. GEF-5 National Portfolio Formulation Exercise (NPFE)	n/a

As part of national efforts to meet the obligations of these conventions, the Liberian Government has taken a central role of coordinating and harmonizing the various initiatives and strategies operating under the different conventions. Under this arrangement, the SGP is a partner responsible for mobilizing the CSOs to ensure better coordination and management of Liberia's natural resources and the general environment. Through the GEF/NGO network, there are opportunities to promote community involvement in the implementation of the conventions.

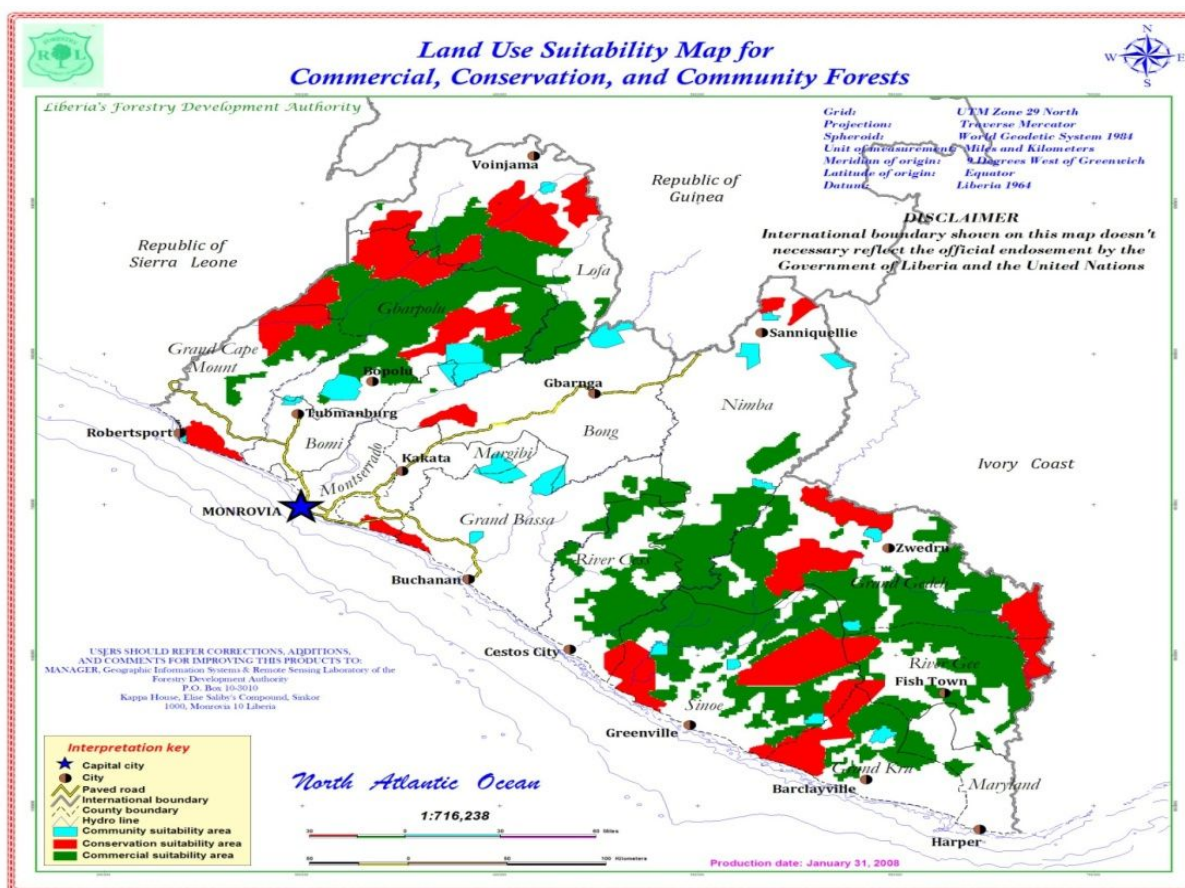
A review of the implementations of the various conventions and the national policies identified gaps, issues and opportunities that support the activities of the SGP in the country. The main environmental issues identified are the continuous declining of the national forest cover and forest resources due to mainly shifting agriculture, logging, fuelwood production and biodiversity degradation as a result of uncontrolled and over exploitation of forest and wildlife resources. This situation is compounded by the inconsistent and inadequate involvement of local communities and CSOs in forest management programs.

### **3.3 Environmental management challenges**

Decline in the natural environment and ecosystem functions in the country can be attributed to excessive floods and storm due to climate variability, inadequate expertise at the local levels to execute project activities in the climate change and biodiversity conservation focal areas, unsustainable farming practices, increasing use of persistent organic pollutants (POPs) and other chemicals in agricultural production, increasing pollution of the international and national waters (especially the disposal of plastics and human wastes in waters) and persistent abject poverty in rural communities.

The forestry sector started addressing climate change issues on the policy level during the forest reform process (2002 – 2007). One of the achievements was a Land Use Suitability Map depicting commercial, conservation and community forests in Liberia (see Figure 1). Currently the government, in collaboration with international partners, is working on strategies towards ensuring climate change mitigation (e.g. REDD+ initiatives) and adaptation in the country.

Figure 1: Land Use Suitability Map of Liberia



Source: Forestry Development Authority

The SGP also has responded to these challenges by providing technical and financial support to CSOs and CBOs who are working to support the GEF focal areas objectives. The SGP programme has been working to connect technical expertise from the government institutions (policy practitioners, academic and research) to local communities and CSOs to address some of the environmental challenges. In this way, the capacities of the CSOs are being built and communities are being assisted to work towards achieving their developmental aspirations including improvement in their livelihoods while contributing to ecosystems protection which ultimately provide global environmental benefits.

### 3. 4 Liberia's national priorities

The contributions of SGP in OP6plan to national priorities are presented in **Tables 2a &2b** (**Tables2b** is a continuation of **Tables 2a**).Validated in the National Stakeholders Consensus Building Workshop, the tables present the country programme niche and its complementation with the UNDP country strategic programme objectives. The workshop was held in Corina Hotel in Monrovia on December 14, 2015. These national priorities are based on lessons learned from the implementation of OP5.

**Table 1a: SGP contribution to national priorities /OP6 National priorities**

<b>OP6 OBJECTIVES</b>	<b>National Priorities</b>	<b>SGP Country Programme niche relevant to national priorities/other agencies</b>
SGP OP6 Immediate Objective 1 Improve sustainability of protected areas and indigenous and community conservation areas through community-based action.	Conservation of biodiversity at the in-situ level, sustainable use of natural resources, livelihood initiatives to reduce poverty within communities at the fringes of protected areas and documentation of traditional knowledge on plants and animals	Capacity building, conservation enhanced on the community level, issue of forest dwellers.
SGP OP6 Immediate Objective 2 Mainstream biodiversity conservation and sustainable use into production landscapes, seascapes and sectors through community initiatives and actions	Mainstreaming biodiversity conservation into development programs and policies	Biodiversity conservation issues highlighted at the community level, sustainable livelihood initiatives undertaken
SGP OP6 Immediate Objective 3 Promote the demonstration, development and transfer of low carbon technologies at the community level	Mainstreaming climate change mitigation and adaptation into national development policies and programs; awareness on climate change impacts, mitigation and adaptation at the community level	Local capacity build to undertake initiatives lead to sustainable harvest at the community level
SGP OP6 Immediate Objective 4 Promote and support energy efficient, low carbon transport at the community level	Mainstreaming climate change mitigation and adaptation; setting up a National Metrological Stations (NMS) at every project site.	Awareness raising on Climate change issues at local, national and policy levels; generate data on climate.
SGP OP6 Immediate Objective 5	Mainstreaming REDD+	Build the resilience of local



Support the conservation and enhancement of carbon stocks through sustainable management and climate proofing of land use, land use change and forestry	issues to national development with emphasis on land use; capacity building on mainstreaming biodiversity conservation at the community level.	communities to withstand the impacts of climate change and build adaptation capacity
---	--	--

<b>Table 2b: SGP contribution to national priorities /OP6 National priorities</b>		
<b>OP6 OBJECTIVES</b>	<b>National Priorities</b>	<b>SGP Country Programme niche relevant to national priorities/other agencies</b>
SGP OP6 Immediate Objective 6 Maintain or improve flow agro-ecosystem and forest ecosystem services to sustain livelihoods of local communities	National food security issues in climate change mitigation programmes at national level; emphasizing post-harvest processing, storage, marketing linkages and other value additions.	Ensure sustainable livelihood initiatives undertaken and food security sustained.
SGP OP6 Immediate Objective 7 Reduce pressures at community level from competing land uses in the wider landscapes	Land tenure and policy developed	Reduce land related conflicts at the community level thereby enhancing conservation activities at the local level
SGP OP6 Immediate Objective 8 Support trans-boundary water body management with community-based initiatives	Development of national policy on trans-boundary water bodies; Supporting stakeholders consultations on the development of trans-boundary water bodies policy in Liberia	Assist or influence the development of national policy on trans-boundary water bodies
SGP OP6 Immediate Objective 9 Promote and support phase out of POPs and chemicals of global concern at community level	Undertake inventory of POPs and Pesticides in urban centers and industrial areas	Provide technical support to for the phase out of hazardous chemicals and pesticides at the community level
SGP OP6 Immediate Objective 10	Establishment of	Establishment of

Enhance and strengthen capacities of CSOs particularly community-based organizations and those of indigenous people to engage consultative processes, apply knowledge management to ensure adequate information flow, implement conservation guidelines, and monitor and evaluate environmental impacts and trends)	Knowledge management network	environmental NGOs resource center to build capacity for local NGOs
SGP OP6 Immediate Objective 10		
Cross Cutting Results: Poverty reduction, livelihoods and gender	Government Agenda for Transformation	Local level interventions for sustainable livelihoods, and mainstreaming gender at community level initiatives

## 4.0 OP6 STRATEGIES

### Programs and Cross-cutting OP6 grant-making strategies:

4.1 Based on the baseline scoping of the selected areas and the national stakeholder consultation process, the following priority programs within GEF focal areas would be implemented under the GEF OP6 for Core and STAR allocations within the East Nimba Nature Reserve (ENNR), the Lake Piso Multiple Use Reserve (LPMUR) and the other three preferred areas (Sapo National Park, Foya Forest block and Mesorado Wetlands) outside the two core selected areas:

- i. **Capacity development and knowledge management**- For this objective, the focus will be on sharing best practices and engagement in capacity development for local communities through: (a) improving the technological and other knowledge systems for community landscape, (b) Climate Smart Innovative Agro-ecology (CSIA) conservation,(c) low-carbon energy access co-benefits and (d) soil, land & water management.
- ii. **Biodiversity conservation**– promoting community ownership of conservation initiatives and mainstreaming biodiversity conservation and sustainable use of biological resources into production landscapes within the various land use zones in ENNR and LPMUR.
- iii. **Climate mitigation and energy**– promoting sustainable energy in all communities of the project areas and the reduction of Green-House Gas (GHG) emissions in all land-use practices through CSIA at the ENNR and LPMUR.
- iv. **Reduced land degradation**–the focus will be on improving the flow and resilience of agro-ecological systems to sustain livelihoods of local communities within the forest ecosystems of ENNR and within the various ecosystems (terrestrial forest, mangrove, inland wetlands, savannah and coastal) of LPMUR.

- v. **Waste and Chemicals Management**- increasing awareness in phase-out, disposal and reduction of release of plastic materials, human wastes, POP chemicals, mercury and other chemicals of global concern in water bodies and land surfaces at ENNR and LPMUR project sites. In the LPMUR, special focus will be on restriction on release of plastic materials and human wastes in large water bodies (i.e. Lake Piso, Mano River, Maffa River, Mofe River, Manni River and Lofa River). Similar actions will be taken in the Mesorado Wetlands where released of plastic materials and dumping of human waste is escalating every year.
- vi. **International Waters and Integrated wetland management**- Monitoring human activities in major river in project areas (e.g. Mano River, Lofa River, St. Paul River and Cavalla River) and supporting the sustainable management of mangroves within LPMUR (the first RAMSAR site in Liberia).

#### **4.2 Cross cutting activities to be funded under OP6:**

- (a) Piloting innovative agro-ecology models and mechanisms for conservation of carbon stocks in forest and savannah land-use practices at ENNR and LPMUR.
- (b) Promoting organic farming practices and food security in agriculture landscapes at both sites.
- (c) Enhancing sustainable forest and agricultural landscape management for biodiversity conservation at both sites.
- (d) Enhancing wetland management and restoration of mangroves within LPMUR. Similar action is recommended for the Mesorado wetlands.
- (e) Developing and piloting community-based natural resource management modules for ENNR and LPMUR.
- (f) Generating sustainable flows of forest, wetlands and coastal ecosystem services, including sustaining livelihoods of forest, mangrove and fishery dependent people in the LPMUR.
- (g) Generating sustainable flows of forest ecosystem services, including sustaining livelihoods of forest dependent people in the ENNR.
- (h) Promoting solar management for home energy, irrigation, and drying agricultural and fisheries products at the project sites.
- (i) Integrating landscape in the wider landscape of ENNR to ensure reduced pressures on natural resources from competing land uses.
- (j) Integrating both landscape & seascape in the wider landscape/seascape of LPMUR to ensure reduced pressures on natural resources from competing natural resource uses.
- (k) Harmonizing national policies to ensure improving the governance of land management decisions and secured ecosystems for improving their functions and services on the national level. Existing national policies relating to environmental management, development, natural resource management/conservation, coastal defense, land security and human resource development/management will be harmonized to also ensure reduced or no conflict in the implementation of all those policies. Also program/projects and plans related to sustainable land management (SLM) will be subjected to the sustainability approach based on the procedures of strategic environmental assessment (SEA).
- (l) Piloting projects to demonstrate reduction of GHG emissions in agriculture through Climate Smart Agriculture in project areas. Introduce local certification of farmers practicing organic farming at project sites.

- (m) Building local people's capacity in building institutional and commercial wood-fuel stoves at ENNR and LPMUR.
- (n) Introducing innovative agro-ecological models and mechanism for conservation of carbon stocks at project sites.
- (o) Mainstreaming biodiversity conservation and sustainable use of biological resources into production landscapes within the project sites.
- (p) Promoting sustainable fisheries in the Lake Piso basin.
- (q) Introducing and building local capacity in sustainable land-use and water management at project sites.
- (r) Promoting/strengthening community forestry initiatives at project sites.
- (s) Promoting sustainable livelihood initiatives at project sites. [Sustainable livelihood include but not limited to income generation and financial management for women, sustainable management of non-timber forest products (NTFPs), sustainable management/ production of livestock, sustainable fisheries and sustainable crop production].

### 4.3 Seascape/landscape-based OP6 grant-making strategies

#### 4.3.1. About the East Nimba Nature Reserve

The East Nimba Nature Reserve (ENNR) covers approximately 135.70 km<sup>2</sup> and is located in the northern corner of Nimba County, northern Liberia. It is predominant a mountainous landscape area (see *Figure in Section 2.1.1*). It contains extensive terrestrial forest ecosystem and the Cavalla River (a body of international water). The reserve protects part of the Nimba range which is shared by Guinea, Liberia and Ivory Coast. Conservation intervention partners in the area are the Forestry Development Authority (FDA), ArcelorMittal-Liberia, Fauna and Flora International (FFI), Conservation International (CI) USAID/PROSPER and the Co-Management Committee (CMC). Some wildlife of local and international concerns confirmed by various studies conducted in the area the Nimba Toad (*Nimbaphrynoides occidentalis liberiensis*), the Nimba Otter shrew (*Micropotamogale lamoteii*), and the endangered West African chimpanzee (*Pan troglodytes verus*). Other important wildlife species also include the Nimba flycatcher (*Melaenornis annamarulae*) and Red Colobus monkey (*Procladius badius*).

Farming is the major livelihood activity in the ENNR communities. Rice, cassava and vegetables (mainly pepper, bitterballs, okra etc) are cultivated for subsistence. Cash crops reportedly grown are rubber and cocoa. Farming is the most landscape degradation activity. Threats to biodiversity conservation/management include farming, mineral mining and hunting. Community engagement, especially to motivate local people for their involvement in co-management of the reserve, has been the greatest challenge to conservation partners. However, the situation is reportedly improving with the Management Plan in place and the formation of the CMC.s

#### 4.3.2 About the Lake Piso Multiple Use Reserve

The **Lake Piso Multiple Use Reserve** (LPMUR) is about 971.60 km<sup>2</sup> in size. It is situated along the coast in the northwest of Liberia and shared by two political sub-divisions of the country



(Grand Cape Mount and Bomi Counties). The site is a representative of all the major ecosystems in Liberia (including terrestrial forest, marine/coastal, inland wetlands, mountain and dryland/savannah ecosystems) and it has a combination of landscape/seascape containing water bodies (i.e. Lake Piso, Mano River, Lofa River, Po River and Mofe Creek). The LPMUR was established in October 2003. The reserve is locally and globally recognized as an important biological diverse site in the Upper Guinea Rainforest Region. It is a Wetland of International Importance, an Important Bird Area (IBA) and IUCN/CEPF key biodiversity area (KBA).

Intervention institutions include Forestry Development Authority (FDA), Farmers Associated to Conserve the Environment (FACE), Society for the Conservation of Nature of Liberia (SCNL), Bureau of National Fisheries (BNF), World Bank, Paso Conservation Forum (PCF), UNDP and Environmental Justice Foundation (EJF).

LPMUR contains a number of endemic and endangered species, including but not limited to the West African manatee (*Trichechus senegalensis*), Nile crocodile (*Crocodylus niloticus*), sea turtles (including the Green turtle- *Chelonia mydas*, Olive Ridley turtle- *Lepidochelys olivacea* and Leather-backed turtle- *Dermochelys coriacea*), the Western Chimpanzee (*Pan troglodytes verus*), Zebra duiker (*Cephalophus zebra*) and Red Colobus monkey (*Procladius badius*).

manatee captures and killed

Land use activities are mainly fishing, fuelwood harvesting and farming (mainly cultivation of cassava, rice and vegetables such as pepper, bitterballs, okra etc). These activities are the major livelihood activities for the site.

#### **4.3.3. Areas outside the target landscape/seascape**

These are areas where 30% of grant making will be expanded.

- (a) **Sapo National Park (SNP)** established in 1983 and covers 1,804 km<sup>2</sup>. It is currently under protected area management
- (b) **Gola Mesurado Wetlands**, a Ramsar site with extensive mangroves but not under protected area management
- (c) **Foya Forest Block** which also has no management status but FDA views it as rich biodiversity area.

#### ***Management status and interventions***

There is no management structure in place here but the FDA has envisaged future management and proposed the site for protected area management.

## **5.0 COMMUNITY CONSULTATION AND BASELINE ASSESSMENT PROCESS**

### **5.1 The Scoping exercise.**

After series of interactions and consultations with relevant stakeholders (including the SGP National Steering Committee (NSC) and key CSOs in Liberia, the East Nimba Nature Reserve (ENNR) and Lake Piso Multiple Use Reserve (LPMUR) were selected target landscape and seascape areas respectively. Based on the GEF SGP strategic decision to adopt landscape/seascape approach to implementing GEF OP6 in the country, the SGP secretariat in Liberia presented eight sites (four for landscape and four for seascape) to the SGP National Steering Committee (NSC) for consideration. In an NSC technical meeting, ENNR and LPMUR were selected the priority landscape and seascape sites respectively based on the following conditions:

#### **(a) ENNR**

- The landscape is situated in a diverse ecological zone and near the biosphere in Ivory Coast. It lies along an international boundary (Liberia-Ivorian border) and therefore important for cross-border biodiversity conservation programme;
- It is rich in biodiversity prioritized as IIBA and KBA and protected area management;
- The biodiversity uniqueness of the reserve ha attracted external support for management to sustain conservation interventions there;
- Within three years of the dam, a new lake is being formed which is gradually changing the land-use activities that are endangering the forest and biodiversity of the landscape area. The habitats of the endangered and threatened wildlife outside the reserve area are being destroyed through shifting agriculture. This requires interventions to ensure sustainable livelihood for the growing local human population while at the same time ensuring sustainable management of the habitats of the vulnerable and endangered wildlife species;
- The landscape is vulnerable to climate change and variability which is negatively impacting the livelihood systems of the local communities;
- The landscape needs rapidly and immediate transformation in the midst of diverse land uses including agriculture, mining, logging and hunting.

#### **(b) LPMUR**

- The seascape contains representatives of all the ecosystems in Liberia, including coastal, forest, mountain, dryland, wetland and agriculture ecosystems. Sustainable biodiversity management in these ecosystems will guarantee the protection of important biodiversity species and habitats in Liberia.
- The site is the only biodiversity-rich coastal protected area in Liberia. The legislative instrument which established the site as a protected area permits settlements there in and allows local people to carry out their customary land-use practices. This is a great challenge to biodiversity conservation and sustainable ecosystem management.
- It is rich in biodiversity and a priority conservation area for several important species of flora and fauna such as West African manatee, the Red colobus monkey, chimpanzee,

hippopotamus, Nile crocodile, sea turtles and many bird species of international importance;

- Limited external interventions for the protection of vulnerable and endangered wildlife species and conservation of their habitats in spite of the site's relevance to biodiversity conservation in Liberia;
- The landscape is vulnerable to climate change and variability due to uncontrolled and unsustainable land-use practices;
- Unsustainable land-use practices are endangering the livelihood of the local communities and sustaining abject poverty in the site's communities;

## **5.2 Baseline assessment of the prioritized sites**

Farmers Associated to Conserve the Environment (FACE), a local registered environmental NGO was hired and conducted baseline assessment of the prioritized sites between 17<sup>th</sup> November and 4<sup>th</sup> December 2015.

### **5.2.1 The baseline conditions**

See Annex 2 for details on the baseline information

#### **5.2.1.1 Strategic Outlook for ENNR and LPMUR Basin under OP6**

The vision of SGP Liberia during OP6 is to address the underlying drivers of environmental problems in the ENNR and LPMUR through cost effective service delivery and innovative program to innovate and achieve global environmental benefits at community levels. Accordingly, the prioritized strategies will include:

- Minimizing unsustainable land use practices. The strategy will focus on activities farmers, fishermen, hunters and other land users who lack alternative sustainable livelihoods. The strategic consideration will be on:
  - (a) mainstreaming sustainable land management in sustainable development;
  - (b) promoting integrated management of production landscape/seascape;
  - (c) Building local land users' capacity to practice sustainable environmentally friendly agriculture;
  - (d) harnessing and maintaining ecosystem services for agro-ecological intensification; and
  - (e) Enhancing resilience in agro-ecosystems; and
  - (f) Transforming landscape/seascape into a productive and sustainable system.
- Promoting organic farming in the agro-industrial system instead of inorganic fertilizers and pesticides in crop production;
- Conserving of biological resources by addressing the drivers of biodiversity and habitat loss to reduce the pressures on high conservation value habitats. This will include
  - (a) enhancing forest management to maintain flows of forest ecosystem services and improving resilience to climate change through sustainable forest management.
  - (b) improving the loss of ecosystem services within degraded forest landscapes in ENNR and mangrove forests in the seascape of LPMUR through afforestation and natural regeneration; and
  - (c) maintaining forest resources through sustainable management practices, encouraging community forestry by building capacities of and encouraging local communities and restoring forest ecosystems.

- working with CSOs to develop knowledge that will have impact on key drivers environmental problems and jointly create a platform for actions. This requires building synergies with research institutions and/or individual consultants to develop and provide science-based solutions.
- creating village loan system for rural women to encourage them actively participate in the project activities;
- mainstream SGP programme into national plans and strategies to impact national policy making, especially regarding management of the project sites.
- Promote the establishment of a levy system on motorized boats/trawlers and fishing canoes from outside LPMSUR. The levy system should be managed by a professional body with the involvement of local community representatives. The intent of the levy system is to reduce competition the local fishermen face from motorized boats and trawlers owned by foreigners, especially regarding the volume of catch and marketing of the catch which undermines the local economy.

### 5.2.2 Grant-maker+ strategies

The objectives of developing capacities of SGP-Liberia as Grant maker+ are to:

1. offer value-added activities to build capacity of communities and CSOs,
2. foster greater impact in project areas;
3. bridge the gaps between SGP projects and full size projects;
4. facilitate dissemination and uptake of new technologies and approaches *and* communicate needs/trends; and
5. build social capital to increase flexibility and impact in the project areas.

The strategic approach towards grant maker+ activities is to build a network of stakeholders by strengthening the capacities of GEF-NGO network beyond grant-making. Already a body consisting of SGP Grantees has been established as a start to this strategic approach.

### 5.2.3 The additional services and value to be provided by SGP as a Grantmaker+ will include:

- Developing the capacities of stakeholders especially communities and local CSOs to develop relevant proposals to access non-GEF funds especially with bilateral organizations ;
- Encourage the establishment of a CSO-Government Policy and Planning Dialogue Platform, which could be in partnership with the SGP Grantees body already formed;
- setting up a communication channel for use by SGP grantees, the government, GEF, other international donor agencies, and the private sector interested either as a business partner on marketing sustainable products or in CSR partnership;
- establishing a training modules in a local training institution (e.g. Forestry Training Institute in Tubmanburg) to train local people and CSOs in best innovative practices in sustainable agriculture, low carbon technologies, biodiversity enterprise development and financial management;
- repositioning the SGP as a mechanism for delivery and to participate in Non-STAR focal areas as and when the opportunities for these arise. Such non-STAR focal areas include: Chemicals, International Waters, Persistent Organic Pollutants, Corporate budgets and international funds like the Green Climate fund. SGP Liberia, collaboration with local CSOs, should engage in chemical and waste management, creating awareness on the elimination of



harmful chemicals and waste chemical management (POP elimination) and efficient management of mercury in artisanal mining).

#### **5.2.4 CSO-Government Dialogue Platform**

SGP-Liberia will participate in the establishment and management of GEF/NGO platform considering the following strategic steps:

- develop the structure of the platform and launch the platform;
- building on the strengths and opportunities of the GEF/NGO network, develop a long-term strategic plan for the platform to guide its operations in order to build on the trust and good working relations developed and to rely on existing mechanisms of CSOs involvement as well as GEF and SGP activities; and
- train GEF-NGO Network and other stakeholders on the use of different tools and methodologies available to manage and share information on relevant environmental conventions, create knowledge management platform to share lessons learned among CSOs and CBOs. The aim is to get CSOs and CBOs to participate in major national dialogues and get represented in national and international for a where and when feasible.

#### **5.2.5 Policy influence**

In the past, the SGP has been an active partner of the Government of Liberia in policy formulation. SGP will build on this partnership to assist the government in documenting the achievement of GEF in Liberia. It will also make proposal to Government on certain policy implications that will emanate as lesson learned from project interventions.

#### **5.2.6 Promoting social inclusion**

**Promoting social inclusion** will be mandatory. The programme will treat gender as an integral part of all development activities to be supported. Therefore it will always assess all projects for involvement of men and women. The main purpose of gender mainstreaming in projects is to ensure equality, efficiency, sustainability and minimization of resistance to gender considerations in development projects. Recognising gender equality as an important priority for the Liberian society, the SGP will advocate for mainstreaming gender in all GEF projects to advance the global environmental benefits as well as contribute to the goal of gender equality and equity, and social inclusion. The programme will strengthen the involvement of CSOs in the consultations and the implementation of OP6 priority activities.

#### **5.2.7 Knowledge management plan**

The vision of SGP-Liberia programme for OP6 is to become a major knowledge center for community-based initiatives that address environmental problems at the local level while achieving significant global environment impacts. The key strategies to achieving this vision are to:

- (a) develop a web platform that allows better knowledge capturing and sharing, monitoring and evaluation of the use of new media. All grantee CSOs shall have access to the web platform as a part of the digital libraries required in OP6.
- (b) systematize processes and create templates that facilitate data collection for publication;

- (c) develop the capacity of grantees in the use and application of data processing and analysis software to ensure the production of quality, credible and reliable data.
- (d) build capacity for knowledge management at the local level through training and learning;
- (e) contribute to relevant knowledge bases and fora by increasingly forming a constituency of CSOs with capacity, motivation and systematic information flow;
- (f) establish information exchange links/system with the national policy making bodies especially with the Environment Protection Agency (EPA), Forestry Development Authority (FDA), the Ministry of Agriculture (MoA) and Ministry of Lands, Mine and Energy (MLME);
- establish partnership platform to upscale and replicate successful projects and best practices;
- assist SGP Grantees to establish website facilities for their individual programs;
- capture and disseminate the results, lessons learned and best practice from the SGP portfolio via different media by streamlining and strengthening the database, internet and website to allow for knowledge exchange and sharing;
- provide guidance to the CSOs on how to capture and disseminate knowledge and conduct knowledge exchange at the local level to be aggregated at global level.

#### 5.2.7.1 The strategic approach includes:

- standardizing, capturing and disseminating the results, lessons learned and best practice;
- organizing consultations, training and exchanging knowledge between communities and other key stakeholders;
- supporting demonstration sites and knowledge centers around successful projects;
- informing, contributing and influencing local, regional and national policy with the best practices of SGP projects in the country;
- establishing partnerships to upscale and replicate successful projects and best practices;
- maintaining database updated with the latest information on the projects.

#### 5.2.7.2 Knowledge management tools to be applied under OP6 will include:

- **Knowledge need assessment, mapping and audits-** SGP will conduct a needs assessment to understand what information is the most valuable, how to capture it and how to disseminate it.
- **Best Practices-** the programme will continue to capture best practices at the local and global level, conduct case studies, and undertake publications and new media and sharing them at key national and international events and conferences.
- **Coaching, Mentorship and Peer Assist Programme-** the programme will encourage mentorship as a way to capitalize on the knowledge of successful programs to help train new grantees.
- **Peer-to-peer learning-** the programme will facilitate peer-to-peer learning between local communities and past grantees as an effective method to share knowledge, help communities learn from each other and as a tool for replication and up scaling of best practices.
- **Centers of knowledge-** the programme will set up technology and systems demonstration sites or centers of knowledge at project sites where SGP communities have demonstrated a

technology or mastered a process and become a place where other communities, government officials, and development practitioners can learn about it.

- **Communities of Practice(CoPs)** - Communities of practice allows the organization to pool the collective ideas and knowledge of its staff to help build and institutionalize SGP's corporate memory.

## 5.2.8 Communications Strategy

### 5.2.8.1 The main objectives for communication during the OP6 are to:

- ensure that all the lessons learned from the implementation of projects are captured, analyzed and shared with key stakeholders to promote learning within and across communities and countries; and
- help replicate and scale up project impact, as well as to inform policy.

#### 5.2.8.1 The communication strategies are to:

- publish quarterly e-magazines on the project activities and circulate them widely;
- encourage CSOs to initiate weekly radio programs on topical issues on the environment;
- publish annual case studies of best practices

### 5.2.8.2 Considering the results of baseline assessment, the information to be captured and shared are:

#### (a) Socio-economic impacts:

- baseline data of the socio-economics of project area.
- measurable impacts on project area, including positive change in socio-economic conditions due to implementation of the project (e.g. change in average household income, job creation, revenues, livelihood diversification, income diversification, market access etc.).
- secondary benefits (investments into infrastructure, school fees, health care, disease control, etc.) if done.
- participation of women and indigenous people in project activities.

#### (b) Biodiversity/environmental impacts

- baseline data of the environment/biodiversity of project area.
- measurable impacts on project area, including positive change in the environmental/biodiversity conditions due to implementation of the project (e.g. change in vegetation cover, change in wildlife condition, change in health and sanitation, access to more biological resources such as NTFP etc).

#### (c) Policy Impacts

- impacts the community/project has had on policy-making at different governance levels .
- inclusion of community members in project steering committees and advisory bodies.
- change in national, municipal and local laws because of community activity.

## 6.0 EXPECTED PROGRAM RESULT FRAMEWORK

### 6.1 The results framework expected from implementation of OP6

<b>Table 3: SGP contribution to national priorities : GEF 6 corporate results</b>			
<b>OP6 Strategic components</b>	<b>National Priorities</b>	<b>SGP Country Programme niche relevant to national priorities/other agencies</b>	<b>SGP Country Programme UNDP CO strategic programming</b>
SGP OP6 Component 1:  Community Landscape and Seascape Conservation	<ul style="list-style-type: none"> <li>• Maintain globally significant biodiversity and the ecosystem goods and services that it provides to society.</li> </ul>	<ul style="list-style-type: none"> <li>• Promoting ecosystems management through community landscape and seascape (LSSS) strategies to conserve biodiversity, sustainably develop the ecosystem goods and services and enhancing their sustainable utilization. This will help achieve the CBD targets by 2020.</li> <li>• Designing the conservation, and governance of community-managed protected areas by tracking, mapping, documenting and monitoring terrestrial and marine ICCAs, to achieve the Aichi targets 11 (protected areas), a number of ecosystem services and traditional knowledge and to national objectives of mainstreaming biodiversity conservation.</li> <li>• Supporting the sustainable management of coastal wetlands, mangrove conservation and sustainable utilization of resources within degraded landscape in protected areas.</li> </ul>	<p>Contributes to UNDP SDC Outcome 4: Biodiversity &amp; Land Management which seeks to promote land use management practices for forest conservation and buffer zone area created (to take advantage of REDD initiative in Liberia).</p>



<p>SGP OP6 Component 2:</p> <p>Climate Smart Innovative Agro-ecology,</p>	<p>Sustainable land management in production systems (agriculture, rangelands, and forest landscapes)</p>	<ul style="list-style-type: none"> <li>• The programme will promote organic farming and/or agro-ecological farming within the buffer zones of critical ecosystems of protected areas.</li> <li>• The programme will create major activity on forest corridors in sloping lands in danger from slash-and-burn cultivation with the purpose of preventing cover loss and erosion as well as forest fragmentation in the target areas.</li> </ul>	<p>Contributes to UNDP SDC Outcome 4: Biodiversity &amp; Land Management which seeks to promote land use management practices for forest conservation and buffer zone area created (to take advantage of REDD initiatives in Liberia).</p> <p>It also contributes to UNDP SDC Outcome 5: Waste &amp; Chemicals Management. It will build new partnership mechanisms with funding for sustainable management solutions of chemicals and waste at national and/or sub-national level.</p>
---	---	--	---

SGP OP6 Component 3:  Low Carbon Energy Access Co-benefits	Support to transformational shifts towards a low-emission and resilient development path	<ul style="list-style-type: none"> <li>• Build on “bottom-up energy solutions” strategy, using an integrated approach that goes beyond the energy sector and aims at increasing climate resilience and reducing poverty.</li> <li>• Focus on building more institutional and commercial wood-fuel stoves, solar drying and solar for irrigation.</li> </ul>	Fits into UNDP SDC thematic outcome 2: Energy & mitigation
SGP OP6 Component 4:  Local to Global Chemical Management Coalitions	Increase in phase-out, disposal and reduction of releases of POPs, ODS, mercury and other chemicals of global concern	<ul style="list-style-type: none"> <li>• Provide technical support to the phase out of hazardous chemicals and pesticides at the community level.</li> <li>• focus support to communities in the forefront of chemical threats either as users or consumers by:               <ul style="list-style-type: none"> <li>(a) supporting sector-wide awareness raising linked to innovative, affordable and practical solutions to chemicals management in joint effort with</li> <li>(b) establishing partners with new partnerships that will strongly include government agencies, research institutions, and international agencies such as UNIDO and WHO.</li> <li>(c) establishing systems of local certification of organic producers in vegetable initially through producer-consumer agreements eventually graduating to national government policy that will influence markets.</li> </ul> </li> </ul>	Fits into UNDP SDC thematic Outcome 5: Waste & Chemicals Management. The theme seeks to reduce quantities of toxic chemicals and recycle wastes substances and/or disposed them off. It also seeks to organize training and capacity building on waste management and build recycling infrastructures.

SGP OP6 Component 5:  CSO-Government Policy and Planning Dialogue Platforms (Grant-makers+)	Enhance capacity of civil society to contribute to implementation of MEAs (multilateral environmental agreements) and national and sub-national policy, planning and legal frameworks	<ul style="list-style-type: none"> <li>Establishing environmental NGOs resource center to build capacity for local NGOs</li> <li>Assisting stakeholders especially communities and local CSOs to develop capacities as to access non-GEF funds such as with bilateral and in the “<i>direct access</i>” modality of the Adaptation Fund and Green Climate Fund.</li> <li>Assisting in the establishment of a “CSO-Government Policy and Planning Dialogue Platform” (which could be in partnership with the GEF NGO Network); and</li> <li>Establishing a training scheme to train local people and CSOs in best innovative practices in sustainable agriculture, low carbon technologies, biodiversity enterprise development etc.</li> </ul>	Part of UNDP strategy to reach out to the wider society in environmental management.
SGP OP6 Component 6:  Promoting Social Inclusion (Grant-makers+)	GEF Gender Mainstreaming Policy and Gender Equality Action Plan and GEF Principles for Engagement with Indigenous Peoples	<ul style="list-style-type: none"> <li>Expanding support for gender equality and women’s empowerment through proactive promotion of women-led projects, mainstreaming gender in all relevant projects,</li> <li>Networking of women grantee-leaders for knowledge-sharing and policy advocacy. Mainstreaming Policy and Gender Action Plan.</li> </ul>	Fits into UNDP’s strategy on gender mainstreaming and women’s empowerment

<p>SGP OP6 Component 7:</p> <p>Global Reach for Citizen Practice-Based Knowledge program (Grant-makers+)</p>	<p>Contribute to GEF knowledge management efforts</p>	<ul style="list-style-type: none"> <li>• Setting up a “Grassroots Reach” communication channel for use not only by SGP but also by the government, and other international donor agencies, and the private sector interested either as a business partner on marketing sustainable products</li> <li>• Maintaining partnership with the press to sustain awareness creation on sensitive environmental issues.</li> <li>• setting up data and information management systems and coordination mechanisms for sharing knowledge and experience among GEF Grantees</li> <li>• setting up communications strategy development as well as partnership and resource mobilization and integration system (including stakeholder analysis, value chain analysis, and investment mapping).</li> </ul>	<p>Fits into UNDP knowledge management strategy to codify, manage and share knowledge</p>
--	---	---	---



**Table 2: Consistency with SGP OP6 global programme components**

1 OP6 project Components	2 CPS targets	3 Activities	4 Indicators	5 Means of verification
SGP OP6 Component 1:  Community Landscape and Seascape Conservation	<ul style="list-style-type: none"> <li>• To review the existing land tenure and policy of Liberia and mainstream the policy into land uses at the community level To conserve biodiversity at the in-situ level, sustainable use, livelihood initiatives</li> <li>• To at least 2000 ha of terrestrial forest in ENNR under community-based forest management scheme in order to improve conservation and sustainable management and utilization of forest resources.</li> <li>• rehabilitate at least</li> </ul>	<ul style="list-style-type: none"> <li>• Conduct land tenure and land use baseline assessment of project communities to identify land local land policy and competing land use pressures.</li> <li>• Develop landscape/seascape conservation plan jointly with local communities with the aim to reduce competing land use pressures at the community level</li> <li>• Build the capacity of the community-based land-use management body.</li> <li>• Provide support for community actions</li> </ul>	<ul style="list-style-type: none"> <li>• <i>Landscape/seascape conservation plan being implemented.</i></li> <li>• <i>Percent of land cover rehabilitated under community-led conservation actions with through GEF SGP support.</i></li> <li>• <i>Number of community-based land-use management bodies organized.</i></li> <li>• <i>Percent of gender benefiting from capacity building activities.</i></li> </ul>	<ul style="list-style-type: none"> <li>• Project reports</li> <li>• Reports from monitoring visits</li> <li>• GEF SGP database</li> </ul>

	2,000 ha of land in seascape area under community-led actions.			
SGP OP6 Component 2:  Climate Smart Innovative Agro-ecology	To mainstream biodiversity conservation and sustainable use into production landscapes, /seascapes and sectors through community initiatives and actions	<ul style="list-style-type: none"> <li>• Develop and introduce a module for post- harvest processing, storage and marketing linkages for food produce ensuring value additions</li> <li>• Develop at least 1,500 ha of agroecologic land in landscape area under sustainable climate-smart agriculture.</li> <li>• Develop at least 1,500 ha of agro-ecologic land in seascape area under sustainable climate-smart agriculture.</li> <li>• Support community innovative actions for climate smart agro-ecologic actions.</li> <li>• Mainstream gender into agri-ecologic actions at the site level.</li> <li>• Raise awareness on</li> </ul>	<ul style="list-style-type: none"> <li>• <i>Number of hectares of land under climate smart agriculture</i></li> <li>• <i>Number of households involved in agro-ecologic activities.</i></li> <li>• <i>A for value-added module being locally applied.</i></li> <li>• <i>Percent of people involvement on the gender level</i></li> </ul>	<ul style="list-style-type: none"> <li>• Project reports</li> <li>• GEF SGP database</li> </ul>

		Climate change issues at local, national and policy levels.		
SGP OP6 Component 3:  Low Carbon Energy Access Co-benefits	To promote and support energy efficient, low carbon transport at the community level	<ul style="list-style-type: none"> <li>• Conduct climate-change assessment to identify climate change mitigation and adaptation in project sites.</li> <li>• Develop and train local people in the application of modules for climate change mitigation and adaptation for the project sites.</li> <li>• Create awareness on climate change impacts, mitigation and adaptation at the community levels.</li> <li>• Build capacity at the community and gender levels on the production of low carbon energy</li> </ul>	<ul style="list-style-type: none"> <li>• Local experience for climate change mitigation and adaptation documented.</li> <li>• Local people adapting to climate change impacts.</li> </ul>	<ul style="list-style-type: none"> <li>• Project reports</li> <li>• Reports from monitoring visits</li> <li>• GEF SGP database</li> </ul>

		access devices such as wood-fuel stoves, solar panel etc		
SGP OP6 Component 4:  Local to Global Chemical Management Coalitions	To support phase out of POPS and pesticides in urban centers and industrial areas in Liberia	<ul style="list-style-type: none"> <li>• Conduct inventory of POPS and pesticides in urban centers and industrial areas</li> <li>• Conduct a stakeholders validation workshop on the inventory report</li> <li>• Collaborate with the Environmental Protection Agency (EPA) of Liberia to monitor the presence of the identified and confirmed POPS and hazardous chemicals in target communities.</li> </ul>	<ul style="list-style-type: none"> <li>• <i>Types and number of POPS and hazardous chemicals identified and confirmed in the target communities</i></li> <li>• Identified impacts of the chemicals in the target communities Number of copies of the inventory report</li> </ul>	<ul style="list-style-type: none"> <li>• Project reports</li> <li>• Reports from monitoring visits</li> <li>• GEF SGP database</li> </ul>

<p>SGP OP6 Component 5:</p> <p>CSO- Government Policy and Planning Dialogue Platforms (Grant- makers+)</p>	<p>To enhance capacity of civil society to contribute to implementation of MEAs as well as to national and sub-national policy, planning and legal frameworks</p>	<ul style="list-style-type: none"> <li>• establish environmental NGOs resource center to build capacity for local NGOs</li> <li>• assist stakeholders especially communities and local CSOs to develop capacities as to access non-GEF funds such as with bilateral and in the “<i>direct access</i>” modality of the Adaptation Fund and Green Climate Fund.</li> <li>• assist in the establishment of a “CSO-Government Policy and Planning Dialogue Platform” (which could be in partnership with the GEF NGO Network); and</li> <li>• establish a training scheme to train local people and CSOs in best innovative practices in sustainable agriculture, low carbon technologies, biodiversity enterprise development etc.</li> </ul>	<ul style="list-style-type: none"> <li>• A functional resource center for NGO capacity building</li> <li>• A platform for CSO-Government policy and planning dialogue in place.</li> <li>• A training scheme for local people and CSOs in effect.</li> </ul>	<ul style="list-style-type: none"> <li>• Project reports</li> <li>• GEF SGP database</li> </ul>
--	---	--	--	---



SGP OP6 Component 6:  Promoting Social Inclusion (Grant- makers+)	GEF Gender Mainstreaming Policy and Gender Equality Action Plan and GEF Principles for Engagement with Indigenous Peoples	<ul style="list-style-type: none"> <li>• Develop gender action plan in workshop with participants from GEF SGP grantees and other stakeholder including but not limited to key government institutions, gender-based institutions and other CSOs operating in Liberia</li> <li>• Share the plan with GEF SGP grantees and partners.</li> </ul>	<ul style="list-style-type: none"> <li>• A GEF SGP social inclusion plan in place</li> <li>• All GEF grantees adapting the plan</li> </ul>	<ul style="list-style-type: none"> <li>• Project reports</li> <li>• GEF SGP database</li> </ul>
SGP OP6 Component 7:  Global Reach for Citizen Practice-Based Knowledge program (Grant- makers+)	To establish knowledge management framework which links SGP grantees, target project communities and stakeholders	<ul style="list-style-type: none"> <li>• Set up a “Grassroots Reach” communication channel for use not only by SGP and target communities but also by the government, and other international donor agencies, and the private sector interested either as a business partner on marketing sustainable products</li> <li>• Maintaining partnership with the press to sustain awareness creation on sensitive environmental</li> </ul>	<ul style="list-style-type: none"> <li>• A knowledge management system established and is in effect.</li> <li>• A communication system for SGP Gantees developed.</li> <li>• SGP Grantees have access to communication system</li> </ul>	<ul style="list-style-type: none"> <li>• Project reports</li> <li>• GEF SGP database</li> </ul>

		<p>issues.</p> <ul style="list-style-type: none"> <li>• setting up data and information management systems and coordination mechanisms for sharing knowledge and experience among GEF Grantees</li> <li>• set up communications strategy development as well as partnership and resource mobilization and integration system (including stakeholder analysis, value chain analysis, and investment mapping).</li> <li>•</li> </ul>		
--	--	--	--	--

## 7.0 MONITORING & EVALUATION PLAN

7.1. The SGP secretariat will be responsible for the coordination of all projects and activities under the CPS and will monitor the implementation through regular reporting by grantees, field visits and peer review workshops. Each grantee will supervise its own work plan, monitor performance, whether by project inputs and outputs or policy measures, and will report on progress and problems at quarterly bases during project coordination meetings either on-line or during project visits. The regular reports will be analyzed and consolidated by the SGP secretariat as a routine function in preparation for annual reports and project reviews. The project and programme level monitoring and evaluation plan ~~are~~ shall be based on information provided in tables 4 and 5. At the country-level programme level, monitoring and evaluation plan will be on Table 6.

<b>Table 3: Monitoring and Evaluation Plan at Project level</b>					
<b>1. MONITORING: PROJECT LEVEL</b>					
No	Monitoring and Evaluation Activity	Purpose	Responsible Parties	Budget Source	Time frame
1.1	Pre-project evaluation and situational analysis	To assess the baseline conditions and capacity of the NGO	NC, NSC, Grantee	SGP Administrative budget line.	At project planning stage and prior to the NSC project approval
1.2	Baseline data collection	To fit it into the socio-ecological production landscape/seascape	Grantee	Grantee co-financing	At project proposal writing.
1.3	Formulation of operational work plan with indicators	To get the beneficiaries involved in the project planning and implementation	Grantee	Grantee co-financing	Prior to the requests for disbursement
1.4	Project progress and financial reporting to coincide with disbursement schedules	To monitor landscape performance indicators and financial management	Grantee, NSC and PA	Covered under the SGP contribution( 75%) and & co-financing (25%)	Before each disbursement requests
1.5	Project implementation assistance mission and bi-annual	To monitor landscape/seascape performance indicators and	NC and NSC	SGP Administrative budget line	Twice a year: Prior to second and last disbursements

	stakeholder monitoring and evaluation meetings.	ability of Grantee in financial and project management			
1.6	Participatory project monitoring	To learn from best practice and correct emerging mistakes	Grantee and beneficiaries	Covered under the SGP contribution	Midway of the project implementation
1.7	Project evaluation visit	To assess the project performance and review the landscape/seascape management approaches	NC and NSC	Covered under the SGP contribution	Two weeks before conclusion of the project
1.8	Project final Report	External views on the project performance	External consultant/Grantee	Covered under the SGP contribution	Following the completion of project activities
1.9	Project case study reports	To selected best practice and prepare case studies for dissemination	NC, NSC, DPs Independent external party		After the completion of project activities and submission of project final report

<b>Table 4: Monitoring and Evaluation Plan at country level programming</b>					
<b>2. MONITORING: PPROGRAMME LEVEL</b>					
No	Monitoring and Evaluation Activity	Purpose	Responsible Parties	Budget Source	Time frame
2.1	Country programme strategy review	Part of adaptive management learning strategy.	NC, NSC, & selected key stakeholders	SGP Administrative budget	Beginning of OP6
2.2	Strategic country portfolio review	To identify best practices and assess the policy implications for national consideration	NSC, NC & UNDP	SGP Administrative budget	Once during the OP6
2.3	NSC Meetings	To discuss technical issues and approve projects based on the country strategy	NC, NSC, UNDP	SGP administrative and operating cost	Variable depending on projects approval cycle and emerging policy issues

<b>Table 4: Monitoring and Evaluation Plan at country level programming</b>					
<b>2. MONITORING: PPROGRAMME LEVEL</b>					
No	Monitoring and Evaluation Activity	Purpose	Responsible Parties	Budget Source	Time frame
2.4	Performance and results assessment (PRA) of NC performance	To assess the performance of the NC and PA	NC, NSC, UNDP	SGP administrative and operating cost	Once per year
2.5	Country programme review for preparation of Annual Country Report	To assess the country programme performance	NC presenting to NSC	SGP administrative and operating cost	Once per year
2.6	National stakeholders review of country programme	To allow the stakeholders to review the performance of the country programme	NC, NSC and Grantees	SGP administrative and operating cost	Once during the OP6
2.7	Annual Country Report (ACR)	Enable efficient reporting to NSC	NC presenting to NSC & UNDP	Covered under country programme operating costs	Once per year in June
	Annual Monitoring Report (AMR) Survey (based on ACR)	Enable efficient reporting to CPMT and GEF; presentation of results to donor	NC submission to UNDP	Covered under country programme operating costs	Once per year in July
	Strategic Country Portfolio Review	Learning; adaptive management for strategic development of Country Programme	NSC	Covered under country programme operating costs	Once per operational phase
2.8	SGP capacity building and training in GEF thematic focal areas	To build capacities of CSOs in project management and policy dialogue	NC & Grantees	SGP administrative and operating cost	Once every year
2.9	Media encounter and training in reporting in GEF focal Areas	To communicate the best practices of the SGP to the general public.	NC, NSC and Media practitioners	Covered under country programme operating costs	Twice during OP6



## 8.0 RESOURCE MOBILIZATION PLAN

### 8.1 Strategization and Resources Allocation

8.1.1. Following the lessons learnt during the implementation of OP5 and in line with the goal and objectives of OP6, the programme intends to implement projects in the priority areas including the landscape area (ENNR) and seascape area (LPMUR). Table 7 is the guide to the allocation of resources in the priority GEF focal areas during the OP6. Nonetheless, projects to be implemented may not be mutually exclusive to the focal areas. Most projects may be cross-cutting or cover multiple focal areas but will be identifiable with the GEF strategic priorities that they are supporting. In addition, the number of projects for areas outside the priority sites will depend on the amount of available fund and the GEF/SGP grants policy. A total of US\$120,000 is allocated for the three areas. This amount was distributed in the National Stakeholders Workshop as follow : Mesorado Wetlands -15%, Foya forest -7.5% and Sapo National Park 7.5%).

**Table 7:** Guide to Allocation of resources in Priority Areas

ACTIVITY	Hands-on Activity	Research & Policy Analysis	Information Dissemination, Networking & Dialogue	Total
Community Landscape and Seascape Conservation	4	0	0	5
Climate Smart Innovative Agro-ecology	2	1	0	2
Harmonization of National policies	1	0		1
CSO-Government Policy and Planning Dialogue Platforms (Grant-makers+)	0	0	1	1
Global Reach for Citizen Practice-Based Knowledge program (Grant-makers+):	1	0	0	1
Total SGP GEF Focal Area	8	1	1	10

8.1.2. The Following strategies will be put in place to expand the impact of the GEF/SGP in Liberia during the operational phase six:

- Identify income generation and sustainable livelihood issues in target areas and document the information for sharing nationally. This will be done in line with the GEF/SGP focal areas and operational programmes.
- Include capacity building in all projects to ensure technical competence of NGO/SGP communities. One stand alone capacity building project can be implemented to build the capacities of the civil society in project identification, implementation, management, monitoring and evaluation.

- Assess existing and potential partnerships with donors, government and the private sector implemented at country levels.
- Strengthen membership of NSC with additional members (e.g. private sector and representative of Key government institutions).
- Conduct of donors fora at country level to identify potential partners.
- Prepare project portfolios designed to generate additional resources (e.g. micro-credits, blended loans, carbon finance, etc.)
- Intensify resource mobilization efforts particularly in country programmes moving out of dependence on GEF grant funds with dedicated support from SGP CPMT and GEF SGP Steering Committee.

8.1.3 The GEF CORE and STAR funding will continue to be the main sources of funding during the OP6. However, the programme will leverage funding from the UNDP, the Green Climate Fund (a deliverable mechanism by SGP) and the World Bank Dedicated Grant Mechanism. In addition, the programme will seek to liaise with other funding sources in-country to address the problems in the GEF focal areas..

8.1.4 In the situation where the SGP funds are limited and must be used solely reduce threats to the global environment, the SGP will identify strategic partners to co-finance activities and assist with the non-GEF or "baseline" components of the project. Potential partners include the Forestry development Authority, Ministry of Agriculture and international organizations (e.g. Conservation International, Fauna and Floral International, Swedish Relief Counsel, German Agro-Action etc). The SGP will seek partnership from these institutions and get into memorandum of agreement with them. In seeking co-funding for non-GEF activities, SGP will use its available core funds to leverage new and additional funds so as to make the programme bigger and more effective.

#### 8.5 Indicative funds to be mobilized

8.5.1 The NSC will continuously assess the need of the SGP to mobilize resources. By the end of each year, the NSC will estimate what proportion of non-GEF funds is needed by grantees so as to be able to forecast their needs into the future. This will help to define how much time and effort are needed to put into resource mobilization. Currently, at the average global level, the programme is targeting 1:1 ratio between GEF/SGP funding and co-financing from other sources at project levels.

8.5.2 The indicative funds to be mobilized for OP6 programme in Liberia based on initial agreement discussed so far is summarized in table 8. The target is based on the assumption that the project portfolio will be 17 projects annually for four years. Table 8 gives an indicative plan of how funds would be mobilized over years to support SGP activities in country.

FUND SOURCES	ALLOCATION			
	OP6 Yr.1	OP6 Yr.2	OP6 Yr.3	Total
Core GEF Funds	120,000	160,000	120,000	<b>400,000</b>
GEF STAR funds	150,000	200,000	150,000	<b>500,000</b>

Cash to be mobilized from other sources (World Bank Climate Change project for Liberia etc)	50,000	100,000	100,000	<b>250,000</b>
In-kind contribution from NGO and Communities	30,000	40,000	30,000	<b>110,000</b>
<b>Total</b>	<b>350,000</b>	<b>480,000</b>	<b>390,000</b>	<b>1,260,000</b>

## 8.6 Sources of Additional Funding

8.6.1 The strategy to mobilize additional funding for the country programme will cover the following sources of funding:

- World Bank Climate Change project at the FDA (contact Ephraim at FDA)

## 9.0 MATCHING FUND FROM GRANTEES

9.1 The programme will give priorities to community-based projects that have secured matching funds for implementation. The programme will develop joint proposals with the other donors and clearly identify which activities would be implemented by each donor. Most especially the programme will secure co-financing and technical assistance for projects complementation from the Central Government and bilateral interventions at GEF operational sites in the country.

9.2 There are government service providers that have expertise in the GEF focal areas at the local level. Often times, these institutions are resource starved and their interventions at the community level are low. On the other hand, the NGOs/CBOs that operate more cost effectively at the community level have a low technical capacity to implement activities in the focal areas. The SGP will work to bring the technical expertise from the government service providers into close collaboration with the NGO/CBO community. This way, the communities can be assisted to work towards achieving their developmental aspirations including improvement in their livelihoods while providing global environmental benefits.

## 10.0 In-kind contribution from grantees and other Donors

10.1 All projects to be approved are expected to have in-kind contribution of not less than 50 percent of the total project cost. The in-kind contribution will cover direct labour, land and use of office resources for the implementation of field activities. The man-hours that would be invested into the project will be carefully calculated and valued as part of the community contribution to the project implementation.

## 11.0 Sustainable livelihood

11.1 The programme has learned that beneficial impact in the GEF focal areas comes about through using sustainable livelihood strategies. Thus, an essential part of SGP projects is often an income-generation component linked to one of the GEF focal areas. The projects to be implemented possible will buy into the on-going transformation programmes in the country. Using the sustainable livelihood approach, the programme will collaborate with the key land-use institutions (e.g. Ministry of Agriculture, Forestry Development Authority, international NGOs etc) operating in the SGP operational areas to implement sustainable land management project in the two project areas (ENNR and LPMUR) that will contribute to efficiently productive and sustainable livelihood initiatives for the local people.

## **12.0 UNDP and other UN Agencies**

12.1. Mainstreaming the SGP methodology and experience in other UNDP programmes and in the GEF system is a key goal of the sixth operational phase. The GEF/SGP country programmes will increase their links with other UNDP programmes and those involved in poverty alleviation, community development, gender issues, and indigenous peoples. Through these links, cash and/or in-kind (e.g. material supplies, assistance with transportation facilities etc) as well as technical contributions could be realized for the GEF programme.

## **13.0 GEF Macro and Medium-size grants**

13.1. Multilateral Country programmes will join forces with GEF projects and programmes in-country, especially the biodiversity project in the coastal and terrestrial forest zones to achieve a greater impact in the GEF focal areas. Successful GEF/SGP projects can be replicated and expanded using the medium-sized GEF project mechanism. The country programme will also seek to coordinate efforts with GEF projects, including providing support for successful community-based components to explore funding from medium and large-sized GEF. This will contribute to the \$250,000 which will come from other sources.

## **14.0 Bilateral and Multi-lateral Donors**

14.1. The various embassies of the developed countries in Liberia have small grants windows that provide funding in some GEF operational areas, particularly livelihood and sustainable land use. For example, European Union and World Bank have local grants for NGOs that includes support for activities in the forestry and energy sector. The SGP needs to tap actively into these sources of funding as well as linking up with multi-lateral agencies in the country. The programme can develop memorandum of understanding with those embassies and multi-lateral agencies organization for technical assistance in project implementation countrywide. This could result to an annual financial commitment from those institutions to the SGP on specific interventions.

## **15.0 Private Sector participation in SGP**

15.1. The programme should strengthen coopération with the private sector to provide financing for livelihood components in the form of “soft-soft” loans. For example, successful production of non-timber forest product promoted and with a private business entity who may be interested to secure investment in mass production on commercial level. It is hoped that NGO or donor partners would also look to the GEF/SGP when designing their projects to provide them the focus on global environmental concerns. The GEF/SGP could work with project participants to develop mechanisms for commercializing products yielded by project activities. Non-timber forest products are not well promoted in Liberia, however if successfully promoted by an institution or a group (e.g. SGP), it is possible that investors can be attracted as it is being progressively done with Liberian honey produced in Nimba County.

## 16.0 Marketing SGP

16.1. In order to effectively mobilize additional resources, SGP Liberia needs to market itself. In this regard, the SGP should produce brochures that will provide basic information on: *who we are*; what we do; *how the NSC is structured and how it works*. Case studies of some projects in retrospect will be outlined in the brochure. The brochure will provide information on the strengths of the SGP and the opportunities that it has for expanding its achievements.

The following three OP5 achievements could be good examples for this strategy

- (a) SGP supported some farmers in Bong County for the production and marketing of Liberia's pure honey and candle wax succeeded in producing honey products which were placed on the shelves of some leading supermarkets in the Monrovia. This was an effort by SGP to promote non-timber forest product production and marketing locally.
- (b) SGP supported the construction of solar panel which provided light for the Foya Boima Hospital. The intend of this project was to contribute to the reduction of the emission of CO<sub>2</sub> and to reduce the high cost in the purchase of diesel fuel for the 35KVA generator operated by the hospital. This achievement through SGP support contributes to climate change adaptation measures.
- (c) The establishment of three Community Forest Management Bodies (CFMBs) in the Lake Piso Multiple Use Reserve through SGP support is a contribution to REDD+ initiatives and community-led forest management in Liberia.

Promotional/awareness materials on these achievements can attract external resource support for the SGP grantees involved with such activities

## 17.0 Risk Management Plan

The following table projects identified at the SGP landscape/seascape. The degree and probability of occurrence as well as their mitigation measures of these risks are mentioned. Suggestions for their emergency measures should be discussed with target communities during



the pre-assessment phase and the results indicated in the proposal development. A few examples are provided here.

<b>Table 9:</b> Description of risks identified in OP6				
<b>Describe identified risk</b>	<b>Degree of risk (low, medium, high)</b>	<b>Probability of risk (low, medium, high)</b>	<b>Risk mitigation measure foreseen</b>	<b>Suggested emergency plan (these can be discussed in village meeting)</b>
<b>Social and environmental risks</b> 1. Failure to promote equitable sharing benefits of cultural heritage.	medium	Low	Benefit sharing would be documented and discussed before the start of every project	Benefits sharing should consider gender, culture and tenure factors in the target community.
2. Failure to conserve the culture, knowledge, and practices of the local farmers	Low	Low	Every project must be subject to social and environmental assessment to avoid cultural destruction.	All projects must respect the culture, knowledge and traditional practices of the target community
3. Infringing on indigenous people human	Low	Low	All projects must be planned and executed with the	Indigenous people rights, dignity and aspiration must be respected by all SGP grantees.

rights, dignity and aspiration with the introduction of modern agricultural practices			beneficiaries.	
4. Settlements and farms close to the project areas will have to move away to avoid incessant flooding :	Low	Low	Resettlement is not provided for in the legal document establish the ENNR and LPMUR.	An early warning measure/system should be jointly developed with the target community and included as a part of the project's awareness strategy.
<b>Illegal mining risks</b> Those engaged in the illegal gold mining may resist the project	High	low	Adequate education to explain the project concept and benefits	In some communities, illegal mining is a major source of livelihood; can must be taken in handling such case or the community may reject the project.
<b>Climate risks</b> 5. Flooding will destroy farms and inundate wildlife habitats.	High	medium	The project will avoid investing in areas close to water bodies	An early warning campaign should be decided by the SGP team and community leaders.
<b>Fire risks</b> Uncontrolled bushfires will destroy investments on land	High	High	Wildfire management training will be offered to equip farmers in fire management, especially in the LPMUR	The project should plan fire prevention and/or management strategy with community leaders and groups.

<b>Other possible risks</b> 1. Failure to understand who the project is for (beneficiaries reaction) 2. Failure to secure commitments from people who are needed to assist with the project 3. Failure to tie in all the people involved in the project with contracts or Memorandum of Agreement	Medium	Low	Involve all beneficiaries in project planning and management	At the pre-assessment phase, the ownership situation of the project should be well explained to the target community and how the community will be benefited from it.
	High	Medium	Every project will be subjected to pre-project assessment to obtain the commitment of the intended beneficiaries. The project will have to address some of the felt needs of the people.	The role and contribution of the target community should be discussed and outlined during the pre-assessment phase and the commitment highlighted.
	High	Low	The participatory approach by the project will get all beneficiaries committed to the project	During the project launch, it is necessary and important to get into agreement with the target community and individual stakeholders to ensure the involvement of all on the project.

## 18.0 Mitigating risks.

18.1 Each project will have a built-in system that will take whatever actions are possible in advance to reduce the effect of risk. Budgetary provision should be made for mitigation and contingency.

## 19.0 Plan for Emergencies.

19.1 For every risk which would be deemed as significant, emergency plans would be put in place before it happens. See Table in Section 17.0 for suggestions on emergency plan.

## 20.0 Measures and Control.

20.1 The SGP will track the effects of the risks identified and manage them to a successful conclusion. To ensure this action, all SGP grantees will do risk assessment of their project areas to determine current and potential risks to the projects. The assessment should be done before preparing the proposals and the results presented in the proposals. This must be part of the requirements for all SGP proposals.

## 21.0 National Steering Committee Endorsement

NSC members involved in OP6 CPS development, review and endorsement	Signatures
James T. TEWONYAN	
Chea B. GALLY	
Benjamin S. KAEMORH	
Moses MASSAH	
Rufus TARNUE	
Jerry YORMAH	
Michael GARBO	

## REFERENCE

Cohn, J. P., J. A. Lerner, 2003. Integrating land use planning & biodiversity. Defenders of Wildlife, 1101 Fourteenth Street, NW, Suite 1400, Washington, D.C. 20005. 59 pp  
FDA. 2007. *National Forest Management Strategy*. Monrovia, Liberia: Forest Development Authority (FDA).

Fauna & Flora International (2007), CONSOLIDATION OF PROTECTED AREA NETWORK, DRAFT ENVIRONMENTAL AND SOCIAL MANAGEMENT FRAMEWORK (ESMF), FINAL DRAFT

Fauna and Flora International (2013), LAKE PISO MULTIPLE SUSTAINABLE USE RESERVE, Final MANAGEMENT PLAN

FDA (2008), Liberia Protected Areas\ Network - Strategic Plan 2008-2013. Monrovia, Liberia

FORESTRY DEVELOPMENT AUTHORITY (FDA), OPPORTUNITY FOR COMMUNITY-DRIVEN BIODIVERSITY CONSERVATION FOR LIBERIA'S FORESTRY SECTOR, RESULTS OF A SOCIO-ECONOMIC STUDY OF THE WONEGIZI AND GREBO FORESTS

FORESTRY DEVELOPMENT AUTHORITY REPUBLIC OF LIBERIA (March, 2014), EAST NIMBA NATURE RESERVE MANAGEMENT PLAN

FORESTRY DEVELOPMENT AUTHORITY, REPUBLIC OF LIBERIA (22 July 2013), LAKE PISO MULTIPLE SUSTAINABLE USE RESERVE *Approved Final Draft* MANAGEMENT PLAN

Liberia Forest Reassessment Project (July 31, 2002), SNP Socio-economic Survey (March 2002) FINAL DRAFT Survey Report & Recommendations; In partnership with Sapo National Park, Forestry Development Authority, Republic of Liberia

Making Enterprises, Inc. (A social development consulting nonprofit organization), INCEPTION REPORT Wonegizi Reserve and Grebo Forests Socio-Economic Study; Biodiversity Conservation through Expanding the Protected Area Network Submitted to Forestry Development Authority (FDA) Republic of Liberia.

Sambolah, R., (July 20, 2010), Report From the Fact Finding Visit to West Nimba Forest Submitted to The Stakeholders Group Meeting on West Nimba Forest

Sambolah, R. S., Farmer, K. H. (Dr.), Kota, A and Suter, J (October 2004); Report prepared for The Liberia Forest Re-assessment Project, a joint initiative of the Forestry Development Authority of Liberia the Department of Statistics of the Liberian Ministry of Planning &



Economic Affairs, and the National Environmental Commission of Liberia, in collaboration with Fauna & Flora International and Conservation International, jointly funded by the European Commission (grant B7-6201/2000-2008) and the Critical Ecosystem Partnership Fund; Addendum on the Rapid Faunal Surveys to Assess Biological Integrity of the Forest Areas of the proposed Lake Piso Nature Reserve.

**SAMBOLAH, R. S., GAMYS, J. (SEPTEMBER 3, 2008), REPORT ON BIOLOGICAL PRE ASSESSMENT PROGRAMME OF THE ARCELORMITTAL OPERATIONAL ZONE OF THE WESTERN ORE DEPOSIT OF THE NIMBA MOUNTAINS, LIBERIA**

Sambolah, R. S., Farmer, K. H. (Dr.), Murray, J. and Suter, J. (August 2004); Report prepared for *The Liberia Forest Re-assessment Project*, a joint initiative of the Forestry Development Authority of Liberia the Department of Statistics of the Liberian Ministry of Planning & Economic Affairs, and the National Environmental Commission of Liberia, in collaboration with Fauna & Flora International and Conservation International, jointly funded by the European Commission (grant B7-6201/2000-2008) and the Critical Ecosystem Partnership Fund. Report on the Socio-Economic Surveys to Assess Social and And Economic Linkages with and Impacts on Forest Areas of Liberia Proposed for the Establishment of National Parks and Nature Reserves.

Society of Conservation of Nature of Liberia (2004), National IBA Conservation Strategy  
Sheppard, D.J., Mulbah, P.G., M.E. Taire& D. Chowolo (2009) Liberia National Carbon Strategy: Capacity Building and Design of Community Forestry Pilots. Wonegizi Assessment Report: Community Forestry Survey at Zياما Clan, Zorzor District. IUCN-EGP report.

Sheppard, D.J., NCRC/Calgary Zoo, Accra, Ghana; Molubah, F. P., (SCNL), Monrovia, Liberia; Sambolah, R. S., (FACE), Monrovia, Liberia (April 2009); Capacity Building and Design of Community Forestry Pilots: A National Carbon Strategy For Liberia; Lake Piso Assessment Report: Community Forestry Survey at Tenor District  
Prepared by Nature Conservation Research Centre, P.O. Box KN 925, Kaneshie, Accra, Ghana.

Waitkuwait, W. E., With technical support from Sambolah, R., and Zwuen, S. S. Edited by Farmer, K. H. (Dr.), and Suter, J. (July 2003); Report prepared for *The Liberia Forest Re-assessment Project*, a joint initiative of the Forestry Development Authority of Liberia the Department of Statistics of the Liberian Ministry of Planning & Economic Affairs, and the National Environmental Commission of Liberia, in collaboration with Fauna & Flora International and Conservation International, jointly funded by the European Commission (grant B7-6201/2000-2008) and the Critical Ecosystem Partnership Fund. Report on the Socio-Economic Surveys to Assess Social and And Economic Linkages with and Impacts on Forest Areas of Liberia Proposed for the Establishment of National Parks and Nature Reserves. Report on the Rapid Faunal Surveys to Assess Biological Integrity of Forest Areas of Liberia Proposed for the Establishment of National Parks and Nature Reserves.

## ANNEXES

### **Annex A:** REPORT ON THE SCOPING OF PROPOSED SITED FOR THE LANDSCAPE/SEASCAPE ASSESSMENT FOR THE DEVELOPMENT OF THE UNDP PROGRAMME STRATEGY



BY Farmers Associated to Conserve the Environment (FACE)

November 10, 2015



## 1.0 INTRODUCTION

A day scoping consultative meeting with focus on the identification of potential landscape and seascape sites in Liberia was held in November 2015 in the UNDP office in Monrovia. The meeting was attended by the National Steering committee consisting of seven members.

The following sites previously scoped by Farmers Associated to Conserve the Environment (FACE) were presented in the meeting for selection of one site for each of the two project sites (i.e. landscape and seascape):

- (a) four landscape sites (Proposed Gola Forest Protected Area, Proposed Wenegizi Forest Protected Area, East Nimba Nature Reserve, and Sapo National Park) and
- (b) four seascape sites (Bafu Bay, Bacculine, Marshall and Lake Piso Multiple Use Reserve).

### a. SCOPING OBJECTIVES

Two objectives of the scoping process were:

- To prioritize proposed sites for the landscape/seascape assessment.
- To identify socio-economic and biophysical features as well as valuation of the technical components of the sites for selection.

## 3.0 METHODOLOGY

A desk study was done to determine potential sites and gather justifiable information on their suitability for the SGP Country Programme Strategy. The scoping focused on:

- (a) sites currently under protection and being managed in Liberia;
- (b) sites considered internationally and nationally important for conservation and having the potential for protected area management, though not under full protect area management but proposed for protection and
- (c) sites with important ecosystem and land-use values but not falling into any of the above two mentioned categories.

Eight sites were selected for the scoping in the two categories; four sites for the landscape and four for the seascape. Two TABLES were prepared (*see Section 2.1 and 2.2 for TABLE 1 and TABLE 2 respectively*). **TABLE 1** presents summary profile of the four Landscape sites and **TABLE 2** summary profile of the four seascape sites.

Key individuals of target stakeholder institutions were contacted for further information on these sites; among those institutions include the Forestry Development Authority (FDA- 3 individuals), Environmental Protection Agency of Liberia (EPA- 2 individuals), Society for the Conservation of Nature of Liberia (SCNL- 1 individual) and Farmers Associated to Conserve the Environment (FACE- 1). Based on brief information from those individuals, **TABLE 1** and **TABLE 2** were improved and presented in a meeting to the SGP National Steering Committee (NSC) for prioritizing two sites for baseline assessment. The participants prioritized East Nimba Nature Reserve (ENNR) and Lake Piso Multiple Sustainable Use Reserve (LPMSUR) for the landscape and seascape sites respectively.

#### 4.0 DELIVERABLES

The main deliverable for the scoping is a report containing the two sites selected for areas for the SGP country programme strategy.

#### 5.0 FINDINGS

The eight sites presented in the NSC meeting were discussed and analyzed. Below are key issues deliberated in that meeting; the selection for assessment was made based on the status of the sites.

##### 5.1 Landscape sites

TABLE 1 below contains sites proposed for the seascape areas. The table is structured in a way that makes comparison and analysis of the proposed sites easily debatable.

1	Site	Gola Foest	Wonegizi Forest	East Nimba Forest	Sapo Forest
2	Location (county)	Shared between Cape Mt & Gbarpolu	Lofa	Nimba	Shared between Sinoe Grand Gedeh & River Gee
3	Approx. size	970 km <sup>2</sup>	950 km <sup>2</sup> (?)	135.69 km <sup>2</sup>	1,800 km <sup>2</sup>
4	PA status	Proposed Peace Park	Proposed Reserve	Nature Reserve	National Park
5	Ecosystems	Terrestrial forest and inland wetlands	Terrestrial forest, mountain and inland wetlands	Terrestrial forest, mountain and inland wetlands	Terrestrial forest, mountain and inland wetlands
6	Presence of species of global significance	Bare-headed Rockfowl, Pygmy hippopotamus, Western Chimpanzee	Bare-headed Rockfowl, Pygmy hipo, Western Chimpanzee, Elephants	Red Colobos, Nimba flycatcher Swallow-tailed butterfly	Bare-headed Rockfowl, Pygmy hippopotamus, Western Chimpanzee, Elephants, Jentink's Duiker, Zebra Duiker, Giant Pangolin, Leopard, Giant forest hog
7	Threats to Biodiversity	Farming, mineral mining, hunting	Farming, hunting	Farming, mineral mining, hunting	Farming, mineral mining, hunting, cassava farming
8	Settlement informati	Medium	Relatively high	High	Low

	on				
9	Main livelihood activities	Rice farming, mineral mining, hunting	Rice farming, hunting	Rice farming, mineral mining, hunting	Rice farming, mineral mining, hunting, cassava farming
10	Partners present	BirdLife Intl, SCNL, CI	FDA, FFI, SADS	FDA, Arcelor Metal, CI	FDA, FFI,
11	Challenges	Bad road condition	Community land ownership	Urban development	Confidence crisis with park management

For each site, information is provided on its name, location in Liberia, size and protected area status. Briefly described also are the ecosystems present, presence of species of global significance, threats to biodiversity, settlements in the area, main livelihood activities, (intervention) partners present and Challenges for conservation (*see Table 1 and Table 2*).

#### (a) Proposed Gola Forest PA

The size of the proposed Gola Forest PA is approximately 970 km<sup>2</sup> and situated between Grand Cape Mount and Gbarpolu Counties in western Liberia. It lies near the border of Liberia with Sierra Leone and shares common boundary with the Gola Forest of Sierra Leone. It contains extensive terrestrial forest and inland wetland ecosystems. Common wildlife species, among others, are the Bare-headed Rock fowl, Pygmy hippopotamus and Western Chimpanzee. The site is recognized as an Important Bird Area, was proposed in 2006 for protected area management and has been declared a 'Peace Park'. The major land use activity is alluvial mining. Another important livelihood activity is farming with the cultivation of mainly rice and vegetables e.g. pepper, bitterballs, okra etc). Hunting is reported by the FDA as a major income generating activity in the area. Farming, mineral mining and hunting are the major threats to biodiversity conservation/protection of the Gola Forest. Challenges for management here are difficulty in creating awareness/motivating community dwellers to incorporate conservation actions in their livelihood practices, bad road conditions (potholes and bad bridges throughout unpaved roads) and long distance from Monrovia. How are partners such as Forestry Development Authority (FDA), BirdLife Intl and Society for the Conservation of nature of Liberia (SCNL) are making sacrificial efforts to manage those challenges. Gola Forest was not prioritized for the landscape programme because (a) it has not obtained gazette status, (2) there is no management plan developed and (c) the road to the site is extremely challenging during the raining season.

#### (b) Proposed Wonegizi Forest Protected Area

The size of the proposed Wonegizi Forest PA is approximately 950km<sup>2</sup> and situated in Lofa County in northwestern Liberia. It lies near the border of Liberia with Guinea and shares common

boundary with the Ziama Classified Forest of Guinea. It contains mountainous landscape and inland wetland ecosystem as well as extensive terrestrial forest ecosystem. Common wildlife species, among others, are the Bare-headed Rock fowl, Pygmy hippopotamus, and Western Chimpanzee and Forest elephant. The site is recognized as an Important Bird Area, was proposed in 2006 by FDA for protected area management. The major land use activity is farming with the cultivation of mainly rice, groundpea, and vegetables (e.g. pepper, bitterballs, okra etc). Farming is pronounced and a very crucial threat to the conservation and PA management of the site. FDA, Fauna & Flora International (FFI) and Sustainable Agriculture and Development Services (SADS) are key partners here. Challenges for biodiversity conservation and management here include difficulty in motivating community dwellers to incorporate conservation actions in their livelihood practices and bad road conditions (potholes throughout unpaved roads). Wonegizi Forest also was not prioritized for the landscape programme because similar reasons as the Gola Forest.

#### (c) East Nimba Nature Reserve

The size of the East Nimba Nature Reserve is approximately 135.69 km<sup>2</sup> and situated in Nimba County in northern Liberia. It lies near the border of Liberia with Ivory Coast and shares common boundary with the Biosphere in Ivory Coast. It is predominantly a mountainous landscape area and contains inland wetland ecosystem as well as extensive terrestrial forest ecosystem. Common wildlife species, among others, are the Nimba flycatcher, Red Colobus monkey and Western Chimpanzee. The site is recognized as an important biological diverse site in the Upper Guinea Rainforest Region and declared nationally as a protected area (Reserve). Farming (with the cultivation of mainly rice, cassava and vegetables such as pepper, bitterballs, okra etc) is the major land use activity and also the most common livelihood activity. Biodiversity conservation/management threats of the reserve include farming, mineral mining and hunting. Community engagement, especially to be involved in co-management of the PA, has been the greatest challenge. However, with intervention by key partners including (but not limited to) FDA, FFI, Arcelor Mittal and Conservation International (CI) this challenge is becoming less critical. ENNR was selected because it has as advantages (a) protected area status, (b) management plan in place and (c) much more improved road condition which makes accessibility much less difficult.

#### (d) Sapo National Park

The size of Sapo National Park is approximately 1,800 km<sup>2</sup> and situated between Sinoe, Grand Gedeh and River Gee Counties in southeastern Liberia. It lies and shares common landscape between the three counties with more than half in Sinoe County. It contains mountainous landscape and inland wetland ecosystem as well as extensive terrestrial forest ecosystem including a mixture of lowland and highland features. The park contains almost all the terrestrial and inland wetland wildlife species of Liberia including, among others, the birds of Liberia, mammals, amphibians, reptiles, insects etc. The site is recognized as an Important Bird Area, was proposed in 1983 and declared a PA in 1986. The park is Liberia's first PA. The major land use activities are farming with the cultivation of mainly rice, cassava, and vegetables (e.g. pepper, bitterballs, okra etc), alluvial mining and hunting. For the local communities, farming and hunting are the major livelihood activities. Until the Ebola crisis, hunting was the most common income generating activity in the area. The most common threats to biodiversity conservation/management of the area are alluvial mining, hunting and farming (mainly cultivation of cassava and rice). The most



critical challenges to management of the area are containing the threats mentioned above as well as bad road conditions and long distance from Monrovia to the park. Sapo National Park was not selected purposely because of accessibility problem; it takes over eight hours during the raining season to get there and the cost of vehicle service for one round trip can be very high often.

## 6.0 Seascape sites

### (a) Bafu Bay

The size of the Bafu Bay site is not yet known. This site is situated on the coast in the northwest of Sinoe County, south east of Liberia. It is situated in the proposed Cesstos-Senkwen PA between Sinoe and Rivercess Counties. Bafu Bay is a coastal plain community containing coastal wetland ecosystem including the Atlantic Ocean, extensive mangrove forest varieties of coastal vegetation. It also contains limited terrestrial forest ecosystem with lowland features. Despite the extensive mangrove forest in the area, the site has not yet gained any management status. The land use activities here are mainly fishing and farming with the cultivation of rice, cassava, and vegetables (e.g. pepper, bitterballs, okra etc). Fishing and farming are major livelihood activities. Threat to conservation/management is mainly bad road condition including potholes throughout unpaved road and long distance from Monrovia. Although the site was observed to contain several blocks of intact mangrove forests, it has no protected area status, there is no presence of intervention initiatives to date, no written baseline information exists and traveling there by road is quite challenging during the raining season. Therefore it was not prioritized for the seascape programme.

### (b) Bacculine

The size of the Bacculine seascape site is not yet known. Bacculine is situated on the coast in the southeast of Buchanan in Grand Bassa County, south east of Liberia. The site is a coastal plain community containing coastal wetland ecosystem including the Atlantic Ocean, extensive mangrove forest and varieties of coastal vegetation. It also contains limited lowland terrestrial forest ecosystem that has been deforested as a result of human activities. Despite its significant ecosystem values (mangrove forests, important beaches as sea turtles breeding site and a major site for human livelihood (fishing), it has not yet experienced sustainable conservation intervention or management status. The land use activities here are mainly fishing and farming (cultivation of coconut, rice, cassava and vegetables such as pepper, bitterballs, okra etc). Fishing and production of coconut oil are the two major livelihood activities. Threat to conservation/management is mainly increase in human population and farming. There is no presence of intervention initiatives to date. Bacculine was not prioritized for the similar reasons as in the case of Bafu Bay except that its accessibility during the raining season is not a big challenge.

### (c) Marshall Wetlands

The size of Marshall Wetlands is 121.68 km<sup>2</sup>. The site is located on the Margibi County coast and about 35km southeast of Monrovia. It is a coastal Wetlands of International Importance (Ramsar site) and an Important Bird Area in Liberia. The beaches of the site are well known as sea turtle breeding ground. There are extensive mangroves but limited terrestrial forest. It is a suburban community where human population is rapidly growing. Land use activities include

fishing, cassava farming and settlement creation. The major livelihood activity is fishing and petty trading. The current threats to conservation in the area are harvesting of mangrove wood for fish smoking and mangrove land reclamation for construction of structures such as homes and business centers. These threats may be exacerbated in the very near future due to rapid explosion of human population. Currently, SCNL and the Environmental Protection Agency of Liberia (EPA) are intervention institutions in the area. The FDA occasionally conducts tree planting there also. Marshall was not selected because it lacks management plan, there is no management team present and the site is not large enough for the programme.

#### (d) Lake Piso Multiple Use Reserve

The size of the Lake Piso Multiple Use Reserve is 971.60 km<sup>2</sup>. The site is situated on the coast in the northwest of Liberia and shared by Grand Cape Mount and Bomi Counties. The site is declared as Wetland of International Importance (Ramsar site) and a protected area (reserve). It is current use as a piloting site for Co-manage of sustainable fisheries program in Liberia. It is also recognized as an Important Bird area and sea turtle breeding site in the country. It contains a coastal ecosystem with long stretch of seashores know as breeding grounds for sea turtles, extensive blocks of mangroves, many water bodies including Lake Piso (now a lagoon) and several rivers and creeks. The site also contains terrestrial ecosystems including terrestrial forest and dryland ecosystems. The land use activities here are mainly fishing, fuelwood harvesting and farming (mainly cultivation of cassava, rice and vegetables such as pepper, bitterballs, okra etc). Fishing, fuelwood harvest and cassava farming are the major livelihood activities. These and intentional burning of savannah grass are the most critical threats to biodiversity conservation in this area. Intervention institutions include FDA, FACE, SCNL, Bureau of National Fisheries (BNF), World Bank, Paso Conservation Forum (PCF), UNDP and Environmental Justice Foundation (EJF). LPNUR was prioritized because it has protected area status, a lot of interventions has taken place and continues to take place there, its accessibility is less challenging during the raining season and it has a management plan in place.

## 7.0 CONCLUSION

The NSC discussions on the above findings from the scoping of the eight sites prioritized East Nimba Nature Reserve (ENNR) and Lake Piso Multiple Use Reserve (LPMSUR) for the landscape and seascape assessment piloting respectively.

## Annex B: Baseline Assessment of priority sites for landscape and seascape management



**BASELINE ASSESSMENT OF EAST NIMBA NATURE RESERVE (ENNR) AND LAKE  
PISO MULTIPLE USE RESERVE (LPMUR) SOCIO-ECOLOGICAL PRODUCTION  
LANDS IN LIBERIA**

PREPARED BY  
Farmers Associated to Conserve  
the Environment  
Monrovia-Liberia  
Farmers.associated@yahoo.com



## EXECUTIVE SUMMARY

This report contains findings of the study on the assessment of the two sites prioritized for landscape/seascape management during GEF OP6. The sites include East Nimba Nature Reserve- ENNR (landscape area) and Lake Piso Multiple Use Reserve-LPMUR (seascape area). The study was conducted by Farmers Associated to Conserve the Environment-FACE, a local environmental Non-Governmental Organization (NGO) in Liberia. There are two objectives of the study: (i) to facilitate multi-stakeholder consultation for achieving a broad consensus on the profile of the two sites to help the SGP National Coordinator facilitate decision on the suitability for the UNDP landscape/seascape programme in Liberia and (ii) to document and recommend practical solutions towards the development of an impact-oriented 3-year strategic plan for providing alternative livelihood for vulnerable communities in the landscape and seascape as well as protecting and revitalizing endangered species in the project areas.

The study was carried out in the prioritized site (ENNR and LPMUR). Both study areas are largely characterized by rich biodiversity, sensitive ecosystems and a great potential for tourism/ecotourism development. The livelihood activities common to both areas is agriculture (mainly rice and cassava cultivation) and free range rearing of animals (sheep and goat). Specifically, livelihoods activities not common to the two sites are fishing and fuelwood production in LPMUR and alluvial mining in the ENNR.

The study methodology used was as follow:

- (e) Stratified communities in the target sites to determine the number and location of communities for the assessment;
- (f) Developed socio-economic and biological assessment tools that can be used effectively to generate sufficient and adequate data (both quantitative and qualitative). The tools include household interview (HHI), focus group discussion (FGD), key informant interview (KII) and community profile templates;
- (g) Before departing for the site, sent written and/or verbal communication to the appropriate authorities (including local government and protected area authorities) in the area, stating the mission of the assessment team and duration of the assessment;
- (h) Upon entering each the town/village, the team held an introductory meeting with the local authorities and restate the purpose of the assessment, explained the field assessment method/process and indicate the role of the local people;
- (i) Conducted transect walk (while the local authorities made arrangement for the interviews. GPS coordinates were recorded and careful observations made on the biophysical setting as well as livelihood activities visible of the community;
- (j) Applied the assessment tools in target communities and generated the needed data;
- (k) At the end of each day, the team members met and made sure that the templates were correctly filled and completed.
- (l) Upon returning to base, the raw data were computerized, analyzed and discussed in the resulting report.

The resulting report was presented in a stakeholder's consensus building workshop. Participants to the workshop included representatives from key stakeholders including SGP grantees, government institutions, environmental NGOs and local communities of the project sites. Participants at the workshop were placed in separate groups in which the OP6 objectives were

carefully deliberated and the challenges as well as mitigation measures for the sites analyzed and recommendations made.

Based on the findings from the baseline survey and the consensus building workshop conducted, the following prioritized strategic areas have been identified for implementation:

- (1) Reduction in the burning of savanna grass;
- (2) Improvement of the livelihood and well-being of communities at both project sites
- (3) Identification and supporting alternative livelihood strategies with little environmental or ecological disturbances for communities at both project sites;
- (4) Creation of multi-stakeholder platforms to focus on issues related to natural resources and environment as well as to promote conservation at both sites,
- (5) Provision of adequate socio-economic infrastructure such as safe drinking water facility, schools, health centers and accommodation for school teachers at both project sites; and
- (6) Providing support for sustainable fisheries initiatives at the LPMUR.

## TABLE OF CONTENTS

EXECUTIVE SUMMARY	52
TABLE OF CONTENTS	53
PROJECT DESCRIPTION	55
Background	57
Objectives	57
Methodology	57
East Nimba Nature Reserve Landscape	58
Description Lake Piso Multiple Use Reserve Seascape	60
PROJECT OUTCOMES	62
Findings	62
Scoring On Various Indicators.....	62
ENVIRONMENTAL AND SOCIO-ECONOMIC CONCERNS AND ACTION PLANS	72
General Concerns	72
Protection of the reserves	72
Charcoal Production	72
Mining (Illegal)	72
Farming	72
Challenges confronting project sites.	72
Strategic Areas for Implementation	73
LESSONS LEARNT AND CONCLUSION	73
REFERENCES	733
ANNEXES	73

## 1. PROJECT DESCRIPTION



## 1.1 Background

The Global Environment Facility (GEF) was established in 1992 to help tackle the numerous and most pressing global environmental problems. Since its establishment, this body has become an international partner for many developing countries, civil society groups and private sector actors to address major environmental challenges. The United Nations Development Programme (UNDP) is one of its implementing partners in Liberia.

The GEF Small Grants Programme (SGP) has initiated its 6<sup>th</sup> Operational Phase (OP6) which will be under implementation during 2015 to 2018. In Liberia, the Landscape/Seascape Approach was selected among the SGP's Strategic Initiatives for the OP6 for implementation. The East Nimba Nature Reserve (ENNR) and Lake Piso Multiple Use Reserve (LPMUR) have been selected for the baseline study. The ENNR and LPMUR are largely characterized by biodiversity richness, reserve sites and sensitive ecosystems. ENNR in particular has great potentials for biosphere management and ecotourism development while LPMUR has a great potential for livelihood management and the development of tourism in general.

## 1.2 Objectives

The current study, 'Baseline Assessment to determine the socio-ecological situations of the ENNR Landscape and LPMUR Seascape in Liberia', has the following objectives:

1. To document the socio-economic status of the communities and the ecological status of the project sites (ENNR and LPMUR),
2. To facilitate multi-stakeholder consultation to achieve a broad consensus of the definitions of the landscape/seascape.
3. To document and recommend practical and resilient solutions towards the development of an impact-oriented strategic plan for providing alternative livelihood solutions for vulnerable communities in the landscape/seascape, protecting and revitalizing endangered species in the project areas for a 3-year period (i.e. 2016-2018).

## 1.3 Methodology

The following methodology was applied in conducting the study:

- (m) Stratified communities in the target sites to determine the number and location of communities for the assessment;
- (n) Developed socio-economic and biological assessment tools that can be used effectively to generate sufficient and adequate data (both quantitative and qualitative). The tools include household interview (HHI), focus group discussion (FGD), key informant interview (KII) and community profile templates;
- (o) Before departing for the site, sent written and/or verbal communication to the appropriate authorities (including local government and protected area authorities) in the area, stating the mission of the assessment team and duration of the assessment;
- (p) Upon entering each the town/village, the team held an introductory meeting with the local authorities and restate the purpose of the assessment, explained the field assessment method/process and indicate the role of the local people;
- (q) Conducted transect walk (while the local authorities made arrangement for the interviews. GPS coordinates were recorded and careful observations made on the biophysical setting as well as livelihood activities visible of the community;
- (r) Applied the assessment tools in target communities and generated the needed data;
- (s) At the end of each day, the team members met and made sure that the templates were correctly filled and completed.

- (t) Upon returning to base, the raw data were computerized, analyzed and discussed in the resulting report.

In addition to the above approach, the study team also Identification of Ecosystem Protection and Biodiversity within the landscape/seascape

- Conducted assessment of the ecosystem and land-use situations at the sites
- Special emphasis was on
  - Forest cover (protected, unprotected, sacred site etc.);
  - Agricultural systems and other land uses;
  - Community livelihoods;
  - Social equity and infrastructure;
  - Knowledge learning and innovation; and
  - Past and present interventions.

#### **1.4 Participatory Workshops**

- In collaboration with the SGP National Coordinator, designed and facilitated two workshops at the community and collected baseline data.
  - Participants included two (2) individuals each from the 20 communities selected
  - Each workshop involved getting participants to identify challenges and discussed in focus groups (FGD) strategies that can improve ecosystem resilience. Participants were allowed to agree or disagree with each other so that forum provides an insight into how a group thinks about an issue, about the range of opinion and ideas, and the inconsistencies and variation that exists in a particular community in terms of beliefs and their experiences and practices.
- Utilized baseline data collected and strategies discussed in workshops to develop the Country Programme Development Strategy based on guidelines and template endorsed by the SGP National Coordinator.

#### **1.5 MapsAccess**

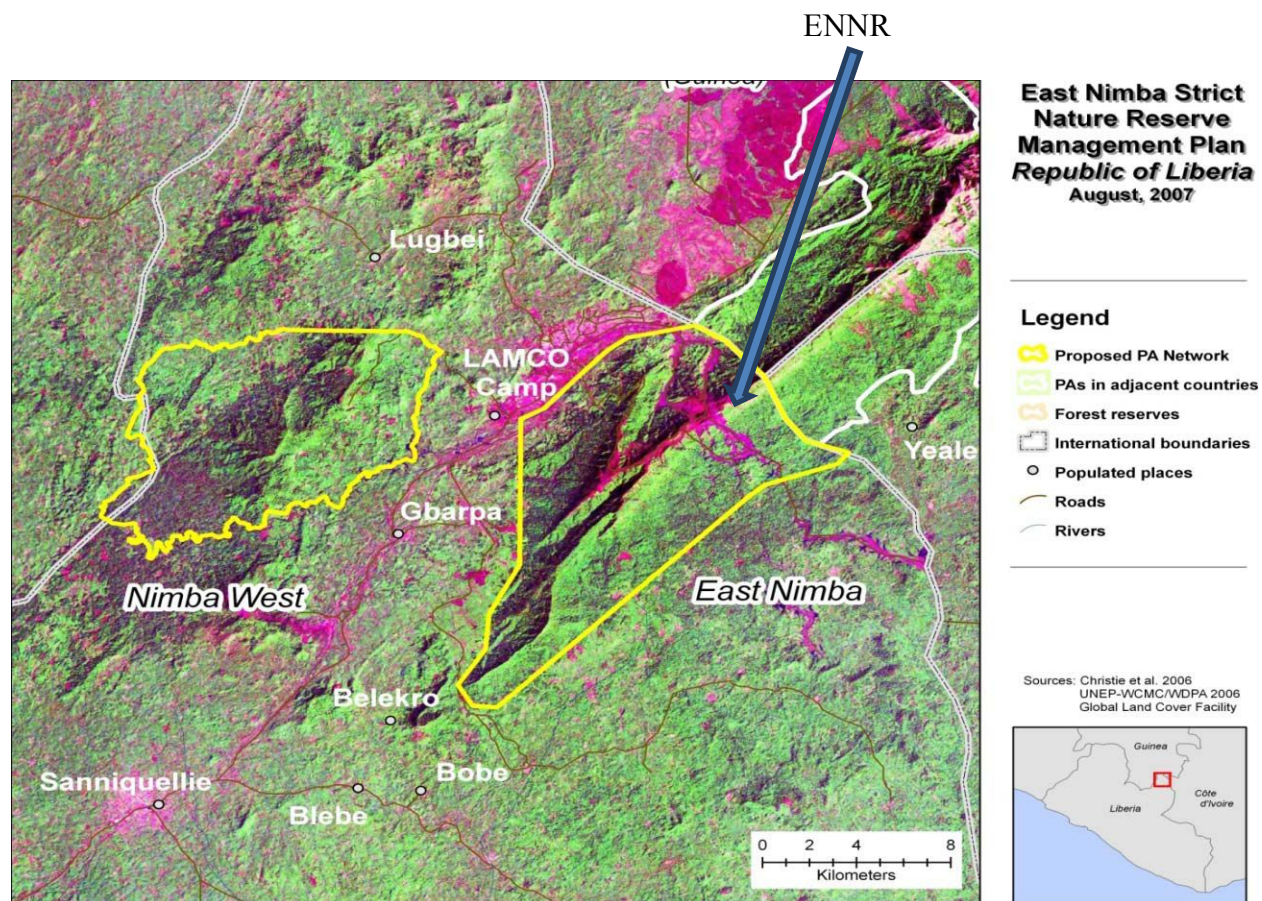
The recent map prepared for developing the management plan for each site was obtained from the Forestry Development Authority. The maps of the two sites depict the vegetation, communities/villages as well as other geophysical features in the landscape/seascape.

## **2.0 Description of the Landscape/Seascape Sites**

### **2.1 East Nimba Nature Reserve Landscape**

#### **2.1.1 Location and geography of the site**

The East Nimba Nature Reserve (ENNR) is located in Nimba County, northern Liberia. It is a part of the Nimba Mountains landscape shared by three countries (Liberia, Guinea and Ivory Coast). The ENNR area consists of about 18 communities (including neighboring communities). AN ACT FOR THE ESTABLISHMENT OF THE EAST NIMBA NATURE RESERVE was approved on October 10, 2013 and a management plan for the reserve drafted.



Source: FDA's GIS Remote Sensing Laboratory

### 2.1.2 Importance of the site

ENNR is important locally and internationally because it is (a) a part of the Nimba Mountains complex which is internationally recognized as a high priority site for its biological richness and (b) on Government of Liberia list of representative forest habitats recommended for strict protection.

Covering 135.69 km<sup>2</sup>, the site of the ENNR was described in the 1960's by the German Forestry Mission to Liberia [*FORESTRY DEVELOPMENT AUTHORITY REPUBLIC OF LIBERIA (March, 2014)*] as the 'richest forest area in Liberia'. The high density of iron ore deposits in the area has resulted in high levels of extraction of the mineral and accompanying serious environmental destruction in many years; However, ENNR continues to protect high closed tropical forest and forms a strong hold for a number of species known to be endemic to the Nimba Mountains area, including the Nimba toad.

### 2.1.3 Livelihoods

The major livelihood activities of communities here are farming (mainly cassava and rice).



According to Sambolah et al (August 2004), farming families also cultivate other crops such as rubber, sugar cane, plantain, banana, cocoyam etc. About 80% of the communities to be involved with the landscape project should be selected from the 18 communities inside the ENNR and the balance 20% from neighboring communities. These communities should be assisted with improved farming methods to ensure high production of crops and improvement in the landscape capacity to support ecosystem services.

#### **2.1.4 Threats to conservation**

Threats to the considerable biodiversity in the region include on-going iron extraction in the area at a commercial scale and extraction of the reserve's natural resources (including bushmeat) for both subsistence and commercial uses. As it was observed by the assessment team, resource extraction in the area has resulted in the past in mountain top removal, extensive road network construction, forest clearing and the creation of additional hunting pressure. Increased hunting pressure is a result of increase in the population of hunters and increased road network which makes the forest and associated wildlife vulnerable.

## **2.2 Lake Piso Multiple Use Reserve Seascape**

### **2.2.1 Location and geography of the site**

The Lake Piso Nature Reserve (LPMUR) area consists of about 28 communities. AN ACT FOR THE ESTABLISHMENT OF THE LAKE PISO MULTIPLE USE RESERVE was approved on October 10, 2013 and a draft management plan for the reserve was developed in the same year but still awaiting endorsement for action. The reserve is located in northwestern Liberia, covers 971.6km<sup>2</sup> and is the only legislated coastal protected area in Liberia. It is shared by two political and administrative counties of Liberia (Grand Cape Mount and Bomi Counties). Sambolah et al (October 2004) reported high biodiversity and ecosystem values of the sites. Coastal floral species in the reserve is dominated by mangroves mainly consisting of five species (*Rhizophoraracemosa*, *R. mangle*, *Avicenniagerminans*, *Conocarpus erectus* and *R. Harrisonii*). Savannah woodland with patches of young secondary forest can be seen in the landscape. Water bodies in the area include the charismatic lagoon called Lake Piso, four rivers (Mano, Mafa, Lofa and Po Rivers), one creek (Mofe Creek) and many lakelets as well as the Atlantic Ocean.



Source:

## Liberia Forest Re-assessment Biological Report

### 2.2.2 Importance of the site

The site is recognized as the only ecological zone of Liberia with the presence of the West African Manatee which is presently under severe hunting threats. It is also the only protected area in Liberia containing all the major ecosystems (i.e. terrestrial forest, lowland/wetland forest, wetlands, coastal, mountain and savannah). The site has been declared by the Liberian Government as a tourism site. It also is a Ramsar site and an Important Bird Area (IBA) as well as a Key Biodiversity Area (KBA).

### 2.2.3 Livelihoods

The major livelihood activities of the LPMSUR communities are fishing, farming (mainly cassava cultivation), commercial wood harvesting and transportation by canoe. About 80% of the communities to be involved with the landscape project should be selected from the 28 communities inside the LPMUR and the balance 20% from neighboring communities.

### 2.2.4 Threats to conservation

The major threats in the area include farming which results to severe deforestation, hunting of important species such as the sea turtles and the West African Manatee and harvesting of fuel

wood from mangrove and terrestrial forests. Intentional burning of savannah fields also impacts important biological resources.

### 3.0 PROJECT OUTCOMES

#### 3.1 Findings

##### 3.1.1 Scoring Various Indicators

The household scoring was done based on various indicators and on the number of individual household heads or their representatives. In The East Nimba Nature Reserve (ENNR), heads (or proxies) of 45 households were interviewed, while 50 were similarly interviewed in the Lake Piso Multiple Use Reserve (LPMUR).

Landscape Diversity and Ecosystem Protection rating in ENNR and LPMUR

The study examined the perception of 45 households in the ENNR. The indicators used included, landscape diversity, ecosystem protection, ecological interaction between different components of the landscape, and recovery and regeneration of landscape. The results from analysis of each indicator (in %) are presented in Table 1a.

<b>Table 1a:</b> Landscape diversity and ecosystem protection.	Household informants responses at ENNR (Total of 45 households were interviewed)				
Indicators	Very low ( per cent )	Low ( per cent )	Medium ( per cent )	High ( per cent )	Very high ( per cent )
Landscape diversity	40.0%	42.0%	17.0%	0.0%	1.0%
Ecosystem protection	14.0%	11.0%	6.0%	30.0%	39.0%
Ecological interactions between different components of the landscape	19.0%	4.0%	14.0%	12.0%	51.0%
Recovery and regeneration of the landscape	33.3%	26.7%	22.2%	17.8%	0.0%

**Source:** FACE Field Survey Data (2015)

The results show that majority of the interviewees rated landscape diversity very low (40.0%) and low (42.0%). This indicates that there is not diversity in the landscape of the area in terms of forest cover and land surface probably due to the impact of farming in the area. However, about 17% per of the respondents rated landscape diversity was reported medium. This suggests that there is significant amount of natural ecosystems and land uses in the area.

The results, in terms of ecosystem protection, show that there is high ecosystem protection in the ENNR (39.0% very high and 30% high). This could be due to the impact of the management of the reserve. About 14.0% and 11.0% of the respondents rated ecosystem protection as very low



and low respective, suggesting that ENNR management actions has not impacted their communities significantly.

Ecological interactions were thoroughly explained to all the respondents to ensure they grasp the concept. About 51% of them revealed that this is very high. However, about 19% of them rated this indicator very low. This implies that forest is degenerating or disappearing in those communities. If forest exploitation and/or deforestation continues in those communities, the situation will affect the farming activities in the areas. This was also expressed by some interviewees when they responded to the indicator ‘Recovery and regeneration of the landscape’. Most responses were in the range of 33.3% to 22.2% from very low to medium. The forest in those areas seems to be recovering very slowly from farming impact.

Interviews conducted with 50 households in the Lake Piso Multiple Use Reserve (LPMUR), yielded interesting results (see Table 1b).

<b>Table 1b:</b> Seascape diversity and ecosystem protection.	Household informants responses at LPMUR (Total of 50 households were interviewed)				
Indicators	Very low (%)	Low (%)	Medium (%)	High (%)	Very high (%)
Seascape diversity	18.0%	12.0%	46.0%	22.0%	2.0%
Ecosystem protection	12.00%	4.00%	15.00%	30.00%	39.00%
Ecological interactions between different components of the landscape/seascape	16.8%	30.0%	38.0%	14.0%	2.0%
Recovery and regeneration of the seascape	4.00%	12.00%	29.00%	25.00%	30.00%

**Source:** FACE Field Survey Data (December 2015)

The results show that majority of the interviewees rated landscape/seascape diversity as medium (46.0%), while 18.0% rated it as very low. There are clearly two diversities here: lowland with water bodies (some bordered by mangrove forest) and lowland with secondary forest. This indicates that there is distinct diversity in the seascape of the area in terms of vegetation cover and land surface probably due to the impact of farming in the area. However, about 18% of the respondents rated seascape diversity as very low. These are respondents in communities with a homogenous ecosystem such as long stretch of mangroves. This suggests that there is significant amount of functional ecosystems and land uses.

Ecosystem protection was rated at LPMUR as very high (39.0%) and high (30.0%). This was reportedly due to the intensive awareness program in the area which started in about 1999. In the last 5 years, communities have taken ownership of managing their mangrove ecosystem. Mangrove vegetation dominates the land cover in the area. About 12.0% of the respondents rated ecosystem protection as very low. This is in communities where farming (mainly cassava farming) is very intense.

Ecological interactions were rated low (30.0%) and medium (38.0%). This was reported in the mangrove communities. Only 2% of the respondents reported this indicator to be very high in the LPMUR. This could be due to low farming pressure in those communities.

Recovery and regeneration of the seascape was rated in the range of 25.0% to 30.0% in the LPMUR. This information relates to the recovery/regeneration of mangroves as a result of intensive awareness and subsequent community actions to protect mangrove forests from harvesting pressure. Only 4.0% of the respondents rated this indicator as very low and 12.0% as low.

### Biodiversity rating in ENNR and LPMUR

Household scoring was done on biodiversity based on various indicators (see Table 2a and 2b). In The East Nimba Nature Reserve (ENNR), heads (or proxies) of 45 households were interviewed, while 50 were interviewed in the Lake Piso Multiple Use Reserve (LPMUR)

Indicators	Household informants responses at ENNR (Total of 45 households were interviewed)				
	Very low ( per cent )	Low ( per cent )	Medium ( per cent )	High ( per cent )	Very high ( per cent )
Diversity of local food system	8.8%	13.3%	31.1%	24.4%	22.2%
Maintenance and use of local crop varieties and animal breeds	26.6%	17.8%	31.1%	11.1%	13.3%
Sustainable management of common resources	13.3%	11.1%	20.0%	24.4%	31.0%

**Source:** FACE Field Survey Data (December 2015)

Diversity of local food was reported medium (31.1%) in some communities of the ENNR. It was also rated higher (24.0%) in some areas. Most of the foods are rice, cassava, plantain and banana as well as vegetables.

Maintenance and use of local crop varieties and animals seem underdeveloped, however. About 26.6% of the respondents rated this situation low while 31.1% rated it medium. Only 11.1% and 13.2% rated it high and very high respectively.

Sustainable management of common resources is a very important issue in biodiversity conservation, this received good rating (Medium=20.0%, high=24.4% and very high =31.0 %.). This practice, if improved, will make significant contribution to landscape management in the area in the future.

In the LPMUR, similar rating was done (see table 2b) on diversity of local food system. Respondents' perceptions were very close and similar and the rating ranges from 18.8% (very low) to 22.2% (very high). The medium rating is 20.0%, indicating significant food diversity. Interestingly, food production in the area focuses on cassava and fish mainly.

Table 2b: Households' Ratings of Biodiversity Indicators in LPMUR Communities	Household informants responses at LPMUR (Total of 50 households were interviewed)
---	---

Indicator	Very low ( per cent )	Low ( per cent )	Medium ( per cent )	High ( per cent )	Very high ( per cent )
Diversity of local food system	24%	18%	20.00%	16.00%	22.00%
Maintenance and use of local crop varieties and animal breeds	14.0%	16.0%	28.0%	22.0%	20.0%
Sustainable management of common resources	14.0%	12.0%	28.0%	28.0%	18.0%

**Source:** FACE Field Survey Data (December 2015)

Rating of ‘Maintenance and use of local crop varieties and animal breeds’ ranges from very low (14.0%) to medium (28.0%). The rate of 20.0% (very high) indicates the abundance of some crop varieties that have existed in the local communities for very long time (for example, cassava varieties grown for the production of gari, the domestication of local breeds of livestock such as sheep, goat and chicken).

Sustainable management of common resources is not a common practice in most communities in the LPMUR. After raising awareness on mangroves protection in the area over 15 years, some local communities have taken ownership responsibility to protect their mangroves. This coastal vegetation was observed regenerating well in some communities.

### Governance and Equity rating in ENNR and LPMUR

<b>Table 3a:</b> Household Rating of Governance and Equity	Household informants responses at ENNR (Total of 45 households were interviewed)				
Indicators	Response				
	Very low ( per cent )	Low ( per cent )	Medium ( per cent )	High ( per cent )	Very high ( per cent )
Rights in PA in relation to access for land/water and other natural resource management	32.0%	2.0%	18.0%	48.0%	0.0%
Community-based landscape governance	40.0%	37.8%	15.5%	6.7%	0.0%
Social capital in the form of cooperation across the landscape	2.2%	2.2%	15.6%	71.1%	8.9%
Social equity (including gender equity)	40.0%	37.8%	15.5%	6.7%	0.0%

**Source:** FACE Field Survey Data (December 2015)

Table 3a presents rating of Governance and Equity at the ENNR on the household level. As a nature reserve, people are restricted from entering the reserve without permission. Majority of the community members (40.0% for no or limited rights) are aware of this restriction. No

respondents (0.0%) reported community members' right to enter the reserve, thus indicating that people have no access to the reserve. However, few community members often provide voluntary services to the reserve management (medium=18.0%) and are allowed to walk in the reserve but accompanied by the reserve's management team.

Low community-based seascape governance was also reported by (40%) of the respondents. However, a medium rating of 15.5% of respondents indicates that some level of governance and equity exists. This is probably linked to the community forestry programme on-going in the area by PROSPER, a US-based NGO operating in the country.

Social capital in the form of cooperation across the seascape is reported high (71.1%) and the medium of 15.6% shows that this indicator is significant in the ENNR communities. Labor sharing (known locally as 'koo') during the farming season is a common example of this cooperation.

Most respondents (40.0% and 37.8%) reported very low and low social equity (including gender equity respectively). No respondent (0.0%) or very low number (6.0%) reported this indicator very high and high respectively.

Table 3b shows rating of Governance and Equity at the LPMUR on the household level. The table shows high percentages (high=54.0% and very high = 35.0%) of people's right in the LPMUR. This is confirmed by the Management Plan of the reserve which allows communities to coexist in this protected area and have the right to continue their normal livelihood activities. However, they also have the right to maintain respect for nature.

Table 3b: Household Rating of Governance and Equity.	Household heads responses at LPMUR (Total of 50 households were interviewed)				
Indicators	Very low ( per cent )	Low ( per cent )	Medium ( per cent )	High ( per cent )	Very high ( per cent )
Rights in PA in relation to access for land/water and other natural resource management	0.0%	2.0%	9.0%	54.0%	35.0%
Community-based seascape governance	8.0%	2.0%	34.0%	36.0%	20.0%
Social capital in the form of cooperation across the seascape	60.0%	10.0%	22.0%	4.0%	4.0%
Social equity (including gender equity)	70.0%	10.0%	18.0%	2.0%	0.0%

**Source:** FACE Field Survey Data (2015)

Community-based seascape governance is on-going in the LPMUR (high=36.0% and very high=20.0%). There is a programme (Co-management Association or CMA) to ensure sustainable fisheries. The programme also includes community outreach to create sustainable fishing practices by local fishermen. However some individual fishermen are reportedly not happy (8.0%) because they say a certain aspect of the programme activities, which has to do with

exchange of fishnets is not financial feasible for them. They have to pay for the new nets, the cost of which some of them cannot afford.

### Knowledge and innovation

A lot of traditional knowledge in Liberia is lost because of lack of documentation. The study explored the knowledge systems in the target communities to confirm this belief. At the ENNR, the local people say there is a lot of innovation in agriculture and conservation practice. Rating was medium (35.6%) and high (23.3%) for innovation in agriculture and conservation practices. It is interesting to note that traditional knowledge in particular was rated high (78.9%) among the local people. But again no written information was found. About 92.2% of the respondents confirmed little or no documentation of local knowledge in their communities.

<b>Table 4a: knowledge and innovation indicators</b>	<b>Key Informants responses at ENNR (Total of 90 Key informants were interviewed)</b>				
Indicators	Response				
	Very low ( per cent )	Low ( per cent )	Medium ( per cent )	High ( per cent )	Very high ( per cent )
Innovation in Agriculture and Conservation Practices	13.3%	15.6%	35.6%	23.3%	12.2%
Traditional knowledge related to biodiversity	0.0%	0.0%	12.2%	78.9%	8.9%
Documentation of biodiversity-associated knowledge	92.2%	7.8%	0.0%	0.0%	0.0%
Women's knowledge in use of biodiversity resources	0.0%	0.0%	3.3%	40.0%	56.7%

Source: FACE Field Survey Data (December 2015)

They also have the perception that women have great knowledge (high=40.0% and very high =56%) in the use of biodiversity resources.

The above perceptions appear true for LPMUR where innovation in agriculture and conservation practices were rated very low by 56.0% of respondents in some communities and low by 34.0% in others. Traditional knowledge was significantly high (71.0%). At the LPMUR, lack of documentation of traditional knowledge system was rated very low by 79.0% of the respondents, meaning either no written document on traditional knowledge or very limited information which should be a future challenge for SGP projects. Women's knowledge in the use of biodiversity resources was also confirmed very high by most people (48.0%) in some quarters and high (34.0%) in others quarters of the LPMUR.

<b>Table 4b:</b> Household Rating of Governance and Equity Indicators	Household informants responses at LPMUR (Total of 50 households were interviewed)				
Indicators	Response				
	Very low ( per cent )	Low ( per cent )	Medium ( per cent )	High ( per cent )	Very high ( per cent )
Innovation in Agriculture and Conservation Practices	56.0%	34.0%	7.0%	3.0%	0.0%
Traditional knowledge related to biodiversity	0.0%	0.0%	21.0%	71.0%	8.0%
Documentation of biodiversity-associated knowledge	79.0%	16.0%	5.0%	0.0%	0.0%
Women's knowledge in use of biodiversity resources	1.0%	1.0%	16.0%	34.0%	48.0%

**Source:** FACE Field Survey Data (2015)

### Available resources

Resources at the local level in the sitescan make significant contribution to development in the area. Import resources include human, social, built and cultural resources.

<b>Table 5a:</b> Group rating of local resources	Group responses at ENNRR (Total of 18 FOCUS GROUPS were interviewed)				
Indicators	Response				
	Very low ( per cent )	Low ( per cent )	Medium ( per cent )	High ( per cent )	Very high ( per cent )
Available human resources	50.0%	22.1%	16.7%	5.6%	5.6%
Available social resources	0.0%	0.0%	5.5%	27.8%	66.7%
Built resources	22.2%	22.2%	5.6%	33.3%	16.7%
Cultural resources (e.g.sacred places)	0.0%	0.0%	11.1%	11.1%	77.8%

**Source:**FACE Field Survey Data (December 2015)

At the ENNR available resources were rated based on the perception of the people during the Focus Groups discussions. About 50% of the groups said human resource is very low, indicating low capacity in those communities to perform some important tasks. However 5.6% of the respondents said there are few people whose capacities are important in the communities (e.g.



teachers, carpenters, masonry workers etc). About 66.7% of the groups said that are important social resources in their communities. For example, the existence of a labour exchange practice locally called ‘Koo’ through which the labour of other people is engaged to help families or individuals with their farming work. Apart from that there are other social groups in some communities (e.g. football club, culture troops etc).

Although there was not much development in some of the communities visited in the ENNR, however one important resource available in almost all the communities is handpump. The existence of this important built resource was confirmed by 33.3% of the Focus Groups as high rating.

The people of Nimba County are well known for their cultural identities and communities of the ENNR are no exception. The Focus Group discussions indicate that 77.8% of the groups confirm very high cultural resource in their area. Cultural value is being currently mainstreamed in Liberia’s conservation programme.

In the LPMUR, 70.0% (very high) and 25.0% (high) were rates for available human resource in the area. The closed proximity of Lake Piso basin to Monrovia attracts skill individuals in the area for a wide range of income generation activities.

<b>Table 5b:</b> Group rating of local resources	Group responses at LPMUR (Total of 20 Focus groups were interviewed)				
Indicators	Response				
	Very low ( per cent )	Low ( per cent )	Medium ( per cent )	High ( per cent )	Very high ( per cent )
Available human resources	0.0%	0.0%	5.0%	25.0%	70.0%
Available social resources	15.0%	5.0%	40.0%	20.0%	20.0%
Built resources	15.0%	5.0%	40.0%	20.0%	20.0%
Cultural resources (e.g.sared places)	5.0%	5.0%	20.0%	40.0%	30.0%

**Source:** FACE Field Survey Data (December 2015)

A medium of 40.0% rating for available social resource suggests diversity of social programs (both traditional and informal). Also this indicated was rated 29% for both high and very high social resource, indicating a wide range of social activities such as entertainment clubbing, women credit clubs, community credit clubs, cultural ceremonies etc.

In the LPMUR, 70.0% of the 20 Focus Groups confirmed very high culture in the local people’s life. This also confirms results of the Fauna and Flora International (FFI) Cultural Value study in 2012/2013 in the area. The study found out that cultural values in the LPMUR are very strong and important for biodiversity conservation. It is necessary that cultural values in conservation be adopted in all SGP projects in Liberia.

## Livelihood and Well-Being

Sustainable livelihood assures the wellbeing of people and people living in forested areas depend almost entirely on forest for their livelihood. However, if human livelihood interventions are unsustainable, those activities become great threats to the natural environment including the very resources the people depend on. It is based on this perception that the Focus Groups were interviewed on their livelihood to be able to analyze the impacts of the local people's activities on their landscape/seascape.

At the ENNR, a total of 18 Focus Groups were interviewed to obtain their perceptions on this topic. Majority (94.4%) of the groups mentioned farming as their basic livelihood activities and the most important for nearly every household. The farming activities include mainly the cultivation of rice, cassava and vegetables. Other crops grown by few people are sugarcane and rubber.

Table 6a: Group rating of Livelihood and Well-Being in ENNR		Group responses at ENNRR (Total of 18 FOCUS GROUPS were interviewed)				
Indicators	Response					
	Very low ( per cent )	Low ( per cent )	Medium( per cent )	High ( per cent )	Very high ( per cent )	
Farming	0.0%	0.0%	0.0%	5.6%	94.4%	
Fishing	0.0%	77.8%	5.6%	16.7%	0.0%	
Hunting	0.0%	61.1%	22.2%	5.6%	11.1%	
Fuelwood business	77.8%	11.1%	11.1%	0,0%	0%	
Petty trade	16.7%	5.6%	16.7%	22.1%	38.9%	

**Source: FACE Field Survey Data (December 2015)**

The second most important livelihood activity at the ENNR is petty trading based on the perception of 38.9% of the groups. About 22.1% of the groups rated this indicator high. Few groups (16.7%) said petty trading was not a major livelihood activity. About 11.1% of the groups admitted hunting as a livelihood activity but majority (77.8% of the groups) rated it very low. Petty trading was followed by hunting as indicated by 11.1% of the groups rating it very high. Medium rating was done by 22.1% of the groups. This activity was reported to have been carried out outside the reserve. Fuelwood business was rated very low as indicated by 77.8% of the groups. Only charcoal is produced currently in some communities and marketed in Yekepa and Sanniquellei.

In the LPMUR, farming was rated very high by 94.4% of the 20 Focus groups interviewed. Also 5.6% of the groups said farming was high. Two major crops of focus are cassava and rice. The region is known for production of quality gari and fufu, both of which are cassava products. Cassava farming in most communities at this site has resulted to severe deforestation in the area.

Table 6b: Group rating of Livelihood and Well-Being	Group responses at LPMUR (Total of 20 FOCUS GROUPS were interviewed)				
Indicators	Response				
	Very low ( per cent )	Low ( per cent )	Medium ( per cent )	High ( per cent )	Very high ( per cent )
Farming	0.0%	0.0%	0.0%	5.6%	94.4%
Fishing	0.0%	0.0%	5.6%	16.7%	77.8%
Hunting	0.0%	61.1%	22.2%	5.6%	11.1%
Fuelwood business	0.0%	0.0%	11.1%	11.1%	77.8%
Petty trade	16.7%	5.6%	16.7%	22.1%	38.9%

**Source: FACE Field Survey Data (2015)**

Next to farming for livelihood activity are fishing and fuelwood harvest and sale which 77.8% of the groups rated very high, By observation, it was noticed that cassava farming was done everywhere while commercial fish was mainly carried out in communities along Lake Piso and beaches. Thus, probably cassava farming alone may be weighted higher than fishing. Generally however, the Lake Piso basin is well known in Liberia for commercial fisheries. A World Bank intervention is current on-going in Robertsport to build a fish preservation facility there. Also a fishery co-management programme (Co-Management Association- CMA) is on-going to ensure sustainable fishing in the basin. Fuelwood are sold in the form of firewood for smoking fish and charcoal for home energy. This is one of the livelihood activities negatively impacting the forests of the Lake Piso basin. Hunting appears uncommon in the area (reported very low by 61.1% of the groups),although 11.1% of the respondents rated it very high, especially with hunting dogs.

Finally, petty trading was reported very high (38.9%) and high (22.1%) by the respondents. The most common commodity is fish, which is transported to Monrovia mainly but also to other places in Liberia for marketing. The CMA, in collaboration with the Bureau of National Fisheries, is currently conducting a net exchange scheme to remove small sieve nets from all communities in the Lake Piso basin. If successful, the programme will be replicated to other fishing communities in Liberia, such as Marshall.

## **A. ENVIRONMENTAL AND SOCIO-ECONOMIC CONCERNS AND ACTION PLANS**

### **4.1 General Concerns**

#### **4.1.1 Protection of the reserves**

The major concern with the ENNR is ensuring its proper protection. Currently resources are insufficient to carry out regular patrol. The reserve is known for harboring fauna species of global importance. Therefore regular patrol and monitoring to keep poachers away is urgent.

The LPMUR is of even greater concerns. The reserve has a multifaceted management situation making its management system highly complex and difficult. With the multiplicity of importance and complex management system, a strategy plan needs to be developed to complement the management plan and ensure sustainable management of the reserve.

#### **4.1.2 Fishing**

Fisheries are a major source of livelihood for most people in the LPMUR communities. The current programme to effect the removal of small sieved fishing nets needs to be rapidly enforced to ensure sustainable management of the fish resource of the area.

#### **4.1.3 Charcoal Production**

For now, this is not a major issue in the ENNR but of grave concern in the LPMUR where important forest blocks are being chopped down to produce and trade charcoal and firewood. Charcoal production is now at a dangerous point in the LPMUR where some forest blocks on the verge of regenerating are being deforested by charcoal producers. Charcoal producers are currently encroaching on the savannah woodland, cutting down patches of secondary forest under the guise of farming. Unless adequate alternative sustainable livelihood initiatives are put in place to provide sustainable income for the local people, the impact of climate change will be exacerbated in this area due mainly to deforestation.

#### **4.1.4 Mining (Illegal)**

Alluvial mining is on-going in some ENNR communities. This has been going on for many years. A landscape management plan should be developed and implemented to contain this activity so that it will not extend into the reserve. This activity is not of concern for the LPMUR at the moment.

#### **4.1.5 Farming**

Rice/cassava farming is being carried out at both sites (ENNR and LPMUR). In both areas, cassava is produced for subsistence and commercial purposes. The farming system in both areas is not stable; there is a shift every year and this could lead to destruction of extensive vegetation cover.

### **4.2 Challenges Confronting Project Sites**

Following are important issues that must be addressed at the two sites during OP6 to ensure conservation of the biodiversity and sustainable management of their habitats.

- (a) Forest clearing for farming, especially establishment of new farms at both sites;
- (b) Commercial fuelwood harvest in the LPMUR for smoking fish and producing charcoal;

- (c) Burning of savannah grass at both sites during the dryseason; this is even more crucial in the LPMUR;
- (d) Alluvial mining in the ENNR neighborhoods;
- (e) Fishing with small-sieved nets in the waters of the LPMUR;
- (f) Cutting of trees in regenerating forests and savannah woodland in the LPMUR for charcoal production;
- (g) Other human activities contributing to climate change impact at both sites;
- (h) Lack of documentation of traditional knowledge;
- (i) Inadequate supply of logistics for conducting patrol in protected areas;
- (j) Unavailable or limited alternative, sustainable livelihood for project communities;
- (k) Weak enforcement of legislation for governing natural resources.

### 4.3 Strategic Areas for Implementation

The followings are priorities for long-term project interventions:

- Providing long-term sustainable livelihood scheme for local communities at project sites;
- Minimizing the cutting of trees in regenerating forests for fuelwood production,
- Supporting the establishment/management of fuelwood lots in charcoal producing communities;
- Supporting the creation and management of community forests at project sites
- Supporting the removal of small-sieved fishing nets from the LPMUR fishing communities
- Supporting the improvement of local agriculture practices to ensure productive land use and sustainable farming benefits at project sites;
- Supporting the establishment and management of community forests in project sites;
- Supporting loan schemes for women groups at project sites;
- Supporting local media for creation of awareness on biodiversity conservation at project sites;
- Supporting the creation and management of a multi-stakeholder forum for promoting conservation and climate change mitigation/adaptation at selected project sites;
- Supporting the creation and management of nature clubs in schools in the project areas; and
- Support the development and enforcement of conservation related legislations and implementation of PA management plans of the project areas.

## 8.0 LESSONS LEARNED AND CONCLUSION

The followings are lessons learned from the assessment:

- Ecosystems in LPMUR are over stressed due to long years of intensive farming, thus rendering them very slow to regenerate and recover;
- The socio-economic infrastructure such as safe drinking water, hospitals, roads, electricity and schools is not adequate at both sites. The local communities recognize this to be very low in most villages and towns;
- Inadequate sustainable livelihood support initiatives at both sites;
- Absence of multi-stakeholder forum at both sites to motivate participatory and effective decision making in relation to the management of the environment;

- Poor management of common resources at both sites;
- Land uses are impacting negatively on the natural environment; and
- Charcoal production is common among communities in the LPMUR and causing a lot of destruction to forest and the savannah vegetations.



## REFERENCES

Cohn, J. P., J. A. Lerner, 2003. Integrating land use planning & biodiversity. Defenders of Wildlife, 1101 Fourteenth Street, NW, Suite 1400, Washington, D.C. 20005.

Fauna and Flora International (2013), Final Management Plan for Lake Piso Multiple Sustainable Use Reserve

FDA. 2007. *National Forest Management Strategy*. Monrovia, Liberia: Forest Development Authority (FDA).

FDA (2008). Liberia Protected Areas\ Network - Strategic Plan 2008-2013. Monrovia, Liberia

FORESTRY DEVELOPMENT AUTHORITY (FDA), OPPORTUNITY FOR COMMUNITY-DRIVEN BIODIVERSITY CONSERVATION FOR LIBERIA'S FORESTRY SECTOR, RESULTS OF A SOCIO-ECONOMIC STUDY OF THE WONEGIZI AND GREBO FORESTS

FORESTRY DEVELOPMENT AUTHORITY REPUBLIC OF LIBERIA (March, 2014), EAST NIMBA NATURE RESERVE MANAGEMENT PLAN

FORESTRY DEVELOPMENT AUTHORITY, REPUBLIC OF LIBERIA (22 July 2013), LAKE PISO MULTIPLE SUSTAINABLE USE RESERVE *Approved Final Draft* MANAGEMENT PLAN

Liberia Forest Reassessment Project (July 31, 2002), SNP Socio-economic Survey (March 2002) FINAL DRAFT Survey Report & Recommendations; In partnership with Sapo National Park, Forestry Development Authority, Republic of Liberia

Making Enterprises, Inc. (A social development consulting nonprofit organization), INCEPTION REPORT Wonegizi Reserve and Grebo Forests Socio-Economic Study; Biodiversity Conservation through Expanding the Protected Area Network Submitted to: Forestry Development Authority (FDA) Republic of Liberia.

Sambolah, R. (2007), Report prepared for the project "Taking Biodiversity Conservation to the Proposed Lake Piso Nature Reserve in Liberia".

Sambolah, R., (July 20, 2010), Report From the Fact Finding Visit to West Nimba Forest Submitted to The Stakeholders Group Meeting on West Nimba Forest

Sambolah, R. S., Farmer, K. H. (Dr.), Kota, A and Suter, J (October 2004); Report prepared for The Liberia Forest Re-assessment Project, a joint initiative of the Forestry Development Authority of Liberia the Department of Statistics of the Liberian Ministry of Planning & Economic Affairs, and the National Environmental Commission of Liberia, in collaboration with

Fauna & Flora International and Conservation International, jointly funded by the European Commission (grant B7-6201/2000-2008) and the Critical Ecosystem Partnership Fund; Addendum on the Rapid Faunal Surveys to Assess Biological Integrity of the Forest Areas of the proposed Lake Piso Nature Reserve.

Sambolah, R. S., Farmer, K. H. (Dr.), Murray, J. and Suter, J. (August 2004); Report prepared for The Liberia Forest Re-assessment Project, a joint initiative of the Forestry Development Authority of Liberia the Department of Statistics of the Liberian Ministry of Planning & Economic Affairs, and the National Environmental Commission of Liberia, in collaboration with Fauna & Flora International and Conservation International, jointly funded by the European Commission (grant B7-6201/2000-2008) and the Critical Ecosystem Partnership Fund. Report on the Socio-Economic Surveys to Assess Social and And Economic Linkages with and Impacts on Forest Areas of Liberia Proposed for the Establishment of National Parks and Nature Reserves.

Sheppard, D.J., Mulbah, P.G., M.E. Taire & D. Chowolo (2009) Liberia National Carbon Strategy: Capacity Building and Design of Community Forestry Pilots. Wonegizi Assessment Report: Community Forestry Survey at Zياما Clan, Zorzor District. IUCN-EGP report.

Sheppard, D.J., NCRC/Calgary Zoo, Accra, Ghana; Molubah, F. P., (SCNL), Monrovia, Liberia; Sambolah, R. S., (FACE), Monrovia, Liberia (April 2009); Capacity Building and Design of Community Forestry Pilots: A National Carbon Strategy For Liberia; Lake Piso Assessment Report: Community Forestry Survey at Tenor District  
Prepared by Nature Conservation Research Centre, P.O. Box KN 925, Kaneshie, Accra, Ghana.

Waitkuwait, W. E., With technical support from Sambolah, R., and Zwuen, S. S. Edited by Farmer, K. H. (Dr.), and Suter, J. (July 2003); Report prepared for *The Liberia Forest Re-assessment Project, a joint initiative of the Forestry Development Authority of Liberia the Department of Statistics of the Liberian Ministry of Planning & Economic Affairs, and the National Environmental Commission of Liberia, in collaboration with Fauna & Flora International and Conservation International, jointly funded by the European Commission (grant B7-6201/2000-2008) and the Critical Ecosystem Partnership Fund.* Report on the Socio-Economic Surveys to Assess Social and And Economic Linkages with and Impacts on Forest Areas of Liberia Proposed for the Establishment of National Parks and Nature Reserves. Report on the Rapid Faunal Surveys to Assess Biological Integrity of Forest Areas of Liberia Proposed for the Establishment of National Parks and Nature Reserves.

### **Annex 3: NATIONAL CONSULTATION AND VALIDATION WORKSHOP**

# REPORT ON THE NATIONAL STAKEHOLDERS WORKSHOP FOR DEVELOPING A COUNTRY PROGRAMME STRATEGY (CPS) FOR



LIBERIA

## SUMMARY

A total number of forty-five participants were invited to the Consensus Building Workshop on the GEF-SGP Country Programme Strategy for Liberia. Twenty-seven attended. The workshop was held in the Corina Hotel on the Tubman Boulevard in Sinkor, Monrovia on December 14 2015. Participants were invited from civil society organizations (most of which were GEF-SGP grantees), target communities, government institutions and the private sector.

The key objective was to build stakeholders' consensus on Liberia's Country Program Strategy (CPS) for OP6 which runs from 2016 to 2018.

Most part of the workshop technical session dwelt on group discussions to obtain participants views on the CPS drafted by the consultant. In order to ensure sufficient time and conducive forum for the discussion, the participants were divided into two groups and separate tasks assigned to each group. Group One deliberated on Objectives 1-5 of the programme framework

and Group Two on Objectives 7-11 as well as the determination of other important areas outside the priority sites to benefit from OP5 funding.

(a) The results of the Programme framework agreed by the participants are presented under the Objective Framework section of this report. Regarding the 30% allocation of the GEF-SGP grant to areas outside the selected areas for the programme period (2016 – 2018), the participants agreed as follows:

- Foya Forest block – 7.5%
- Mesurado wetlands (RAMSAR SITE) – 7.5%
- Sapo National Park – 15%

For the GEF/SGP OP6 for Liberia, the participants also agreed that :

- Identify income generation and sustainable livelihood issues in target areas and document the information for sharing nationally. This will be done in line with the GEF/SGP focal areas and operational programmes.
- Include capacity building in all projects to ensure technical competence of NGO/SGP communities. One stand alone capacity building project can be implemented to build the capacities of the civil society in project identification, implementation, management, monitoring and evaluation.
- Assess existing and potential partnerships with donors, government and the private sector implemented at country levels.
- Strengthen membership of National Steering Committee (NSC) with additional members (e.g. private sector and representative of Key government institutions).
- Conduct of donors fora at country level to identify potential partners.
- Prepare project portfolios designed to generate additional resources (e.g. micro-credits, blended loans, carbon finance, etc.)
- Intensify resource mobilization efforts particularly in country programmes moving out of dependence on GEF grant funds with dedicated support from SGP CPMT and GEF SGP Steering Committee.

## I. INTRODUCTION

The workshop was held in the Corina Hotel located on Tubman Boulevard, Sinkor Monrovia, on Monday (December 14) 2015. It was attended by \_\_\_\_ participants from across Liberia.

### 1.1 Background

The Global Environment Facility (GEF) was established in 1992 to help tackle the numerous and most pressing global environmental problems. Since its establishment, this body has become an international partner for many developing countries, civil society groups and private sector actors to address major environmental challenges. The United Nations Development Programme (UNDP) is one of its implementing partners in Liberia.

The GEF Small Grants Programme (SGP) initiated its 6<sup>th</sup> Operational Phase (OP6) which will be under implementation during 2015 to 2018. In Liberia, the Landscape Approach was selected among the SGP's Strategic Initiative for the OP6 for implementation. The East Nimba Nature Reserve (ENNR) and Lake Piso Multiple Use Reserve (LPMUR) have been selected for the



baseline study. The ENNR and LPMUR are largely characterized by biodiversity, natural reserve sites and sensitive ecosystems. ENNR in particular has great potentials for biosphere management and ecotourism development while LPMUR has a great potential for the development of tourism in general.

Although forty-five individuals from various stakeholder groups were invited to the workshop, twenty-seven persons showed up and participated.

## **II. OBJECTIVE OF THE WORKSHOP**

The objective of the works: To prioritize and agree on presented in the CPS OP6 objective framework for the Liberia's Country Programme Strategy for the Period of 2016-2018. The intent was to do this through consensus building among key stakeholders participating in the 'Consensus Building Workshop'.

## **III. WORKSHOP SESSIONS**

### **3.1 Opening Session**

In the opening remarks, Mr. Jerome Nyanka, Assistant Professor, University of Liberia welcomed the workshop participants and urged them to fully participate and make their inputs towards national consensus to development of the UNDP Country Program Strategy for Liberia for the period 2016-2018. He admonished them to decide on how to achieve the objective of the workshop.

### **3.2 Technical Session**

The technical session of the workshop consisted of the following components"

- Presentation on the objectives of the UNDP CPS
- Presentation on the scoping and baseline assessment process and results
- Presentation on the structure of the CPS
- Questions, answers and comments
- Breakup group session
- Feedback from working session
- Next step

#### **3.2.1 Presentation on the objectives of the UNDP CPS**

Samuel Bokia of UNDP Small Grant Program spoke on the Country Program Strategy (CPS). He noted that the document is developed to guide the SGP grant process. He indicated that the GEF OP5 provided a little over 1 million while GEF OP6 is providing the total amount of US\$0.4 million, which is intended for the entire project phase (2015 to 2018). The OP6 Operation phase will consider the environment, livelihood and poverty reduction.

About 70% of the US\$0.4 million will go toward the two priority selected sites (Lake Piso and East Nimba) while the remaining 30% will go to others important areas that are of similar values as the priority sites but outside the latter sites.

The Country Program Strategy (CPS) of the Small Grants Program (SGP) of the Global Environment Facility (GEF) is the main document governing SGP rules and procedures. The provisions set forth in the document shall be based on SGP GEF Global Guidelines. At the same time, the CPS adapts the general program provisions to the environment of Liberia and it takes into account the changes in the national social-economic, environmental and public sector situations in the country. Liberia's CPS is a strategy being developed for SGP GEF, which you are here to make consensus on its objectives and outcomes, is for operational phase 6 (OP6) which will run from 2016-2018. It may be subject to further revisions but the extent of revisions will depend on the scale of changes inside the country and those relating to the Small Grants Program at the global level.

### 3.2.2 Presentation on the scoping and baseline assessment process and results.

This presentation focused on the objectives of the exercises, how they were conducted and their results (These results are available in the Baseline Assessment Report).

Landscape sites scoped included the Proposed Gola Forest Protected Area, Proposed Wonegizi Forest Protected Area, East Nimba Nature Reserve and Sapo National Park. The seascape sites were Bafu Bay, Bacculine, Marshall Wetlands and Lake Piso Multiple Use Reserve.

Based on the scoping exercise, two sites were selected for the baseline assessment and they include East Nimba Nature Reserve (ENNR- Landscape site) and Lake Piso Multiple Use Reserve (LPMUR- Seascape site). The the baseline study has the following objectives;

1. To document the socio-economic status of the communities and the ecological status of the project sites (ENNR and LPMUR),
2. To facilitate multi-stakeholder consultation to achieve a broad consensus of the definitions of the landscape/seascape.
3. To document and recommend practical and resilient solutions towards the development of an impact-oriented strategic plan for providing alternative livelihood solutions for vulnerable communities in the landscape, protecting and revitalizing endangered species in the project areas for a 3-year period (i.e. 2016-2018).

The results of the baseline study indicate that the two sites were suitable for CPS.

### 3.2.3 Presentation on the structure of the CPS

The following subtopics were as components of the CPS.

- Background to the SGP Country Programme
- SGP Country Programme niche
- Capacity development, poverty reduction and gender issue
- Operational Programme objective framework including the Country Outcomes, indicators and activities
- Monitoring & Evaluation Plan



- Knowledge Management Plan
- Resource Mobilization

The presentation also summarized the project ideas, which are generated from the NGOs and CBOs base on interaction with local communities using participatory process such as dialogical and town hall meetings etc. The project governing structure has three level layers- SGP at the country programme level, the NGO/CBO and the local communities. From the concept stage, project preparation, implementation and the phase out, local participation is virtually guarantee all of these aspects including setting project's objectives, output and activities. Prior to the preparation of the project document, the details of the project idea, objectives, outputs and activities are discussed in town hall meetings to ensure that locals back the idea behind the intervention to increase local support for the project implementation and as well to establish local ownership of the process.

Monitoring of the project will be the duty of the country programme team led by the National Coordinator, members of the National Steering Committee, the Project Management Team compose of the Project Manager from the implementing NGO or CBO, community, women and youth representatives of the host communities on a periodic basis as will be described within the Monitoring and evaluator plan. The result of the monitoring exercise will be documented and discuss in Project Management meeting which include SGP National Coordinator and representatives of the various layers of leadership in the host community. The meeting will recommend changes base on technical and professional consideration as provided for in the monitoring report to improve the management regime of the various projects. Also, document lesson learned during the project implementation to inform future interventions.

### 3.2.4 Questions and Answers

Participants wanted to know the criteria for selecting the sites for scoping and baseline assessment. Richard Sambolah of FACE elaborated on this question as followed:

There were several factors taken into consideration and these include:

- Location of the site
- Size of the site
- Protected area status of the site
- Ecosystems present
- Biodiversity status of the area including species of Global Significance
- Threats to biodiversity conservation
- Settlement information
- Livelihood activities / interventions
- Partners present
- Challenges to interventions

Another crucial question was, "Were communities involved in the baseline assessment exercise?"

Communities were fully involved in the baseline assessment. Three sets of questionnaires were prepared for the data collection which were used to interview local community people. These questionnaires include:

- a) Focus Group Discussion (FGD), used for interviewing gender groups (i.e. female & male).

- b) Household (HHS) for community households) and
- c) Key informant Interview (KII) for interviewing individuals with vast experience in the community and these include hunters, farmers, power-chain saw operators, fishermen, medical personnel, business people etc.

#### IV. RESULTS

Participants were then divided into two groups to deliberate on the objective framework and determine national priorities for Liberia's OP6.

Group One worked on objective 1 to 6 and Group Two worked on Objectives 7- 11 as well as on the selection of other sites which will benefit from 30% of the GEF SGP financial allocation for Liberia.

The consensus results are as follow:

##### (a) Objective framework

The consultant modified the OP5 objective framework for Liberia and presented it for the consensus of the workshop participants. The table below presents the agreed framework of the participants.

1 OP6 project Objectives	2 CPS targets	3 Activities	4 Indicators	5 Means of verification
SGP OP6 Immediate Objective1  Improve sustainability of protected areas and indigenous and community conservation areas through community-based action.	To rehabilitate or help manage at least 2000 ha of terrestrial forest in ENNR under community-based forest management scheme to improve conservation and sustainable management and utilization of forest resources.  To have two coastal wetlands sites and three terrestrial community forest ecosystems	At least 7 projects funded by GEF and non GEF grants covering: <ul style="list-style-type: none"> <li>Pilot innovative agroecology practices and conservation forestry in communities within the ENNR to improve land uses within the landscape.</li> <li>Introduce integrated landscapes management in ENNR and LPMUR to reduce pressures on</li> </ul>	<ul style="list-style-type: none"> <li>Number and type of projects within ENNR and LPMUR supported</li> <li>Size (in ha) of degraded forest restored and managed in ENNR.</li> <li>Number of communities with the number of household</li> </ul>	Quarterly project report by SGP Grantees.  Field monitoring report by NC and NSC.  Projects Annual Monitoring Reports  Projects final reports.  Annual Country Programme Strategy Review  Document on local knowledge on biodiversity available

	<p>around the Lake Piso Ramsar site measuring at least 1,500 ha under community forest management using landscape/seascape management approaches.</p> <p>To document traditional knowledge on plants and animals in ENNR and LPMUR, Foya forest block and Sapo National Park</p>	<p>natural resources from competing land uses in the wider landscape/seascape.</p> <ul style="list-style-type: none"> <li>• Improve the landscape-wide governance of natural resource management decisions at LPMUR and ENNR.</li> <li>• Mainstreaming biodiversity conservation and sustainable use into production landscapes with traditional health practitioners within the project sites.</li> <li>• Conduct wetland management and mangrove restoration within LPMUR and Mesorado Wetlands (RAMSAR sites).</li> <li>• Introduce innovative agro-ecological models and mechanism for conservation of</li> </ul>	<p>s involved in every project.</p> <ul style="list-style-type: none"> <li>• Number of beneficiaries (gender, household and community groups))</li> <li>• Number of natural resource and land management governance committees formed within ENNR and LPMUR.</li> <li>• Number and size (in ha) of degraded mangroves rehabilitated and sustainably managed in each RAMSAR site.</li> <li>• Number and size (in ha) of agroecolo</li> </ul>	
--	--	---	---	--

		<p>carbon stocks in LPMUR.</p> <ul style="list-style-type: none"> <li>• Conduct study and prepare a report (at least 30 pages) on tradition knowledge on local plants and animals.</li> </ul>	<p>gic farms establishe d and managed in each project site.</p> <ul style="list-style-type: none"> <li>• Number of farmers involved in agroecologic farming practice in each project.</li> <li>• Number copies and volume of report on traditional knowledg e</li> </ul>	
SGP OP6 Immediate Objective 2 Mainstream biodiversity conservation and sustainable use into production landscapes, /seascapes and sectors through community initiatives and actions	<p>To place at least 1,500 ha of agroecologic landscape in ENNR under sustainable climate-smart agriculture in ENNR</p> <p>To sustainably manage at least 2,000 ha of mangroves for providing ecosystem service and economic benefits to local communities in</p>	<p>At least 2 projects funded by GEF and non-GEF grants covering:</p> <ul style="list-style-type: none"> <li>• Innovative agro-ecology models and mechanisms for conservation of carbon stocks in deforested land use.</li> <li>• Organic agriculture practice in</li> </ul>	<ul style="list-style-type: none"> <li>• Number of ha of land within the project site supporting climate smart agricultural practices</li> <li>• Number of communities and beneficia</li> </ul>	<ul style="list-style-type: none"> <li>• Project quarterly report by Grantees.</li> <li>• Field monitoring report by NC and NSC.</li> <li>• Annual Monitoring Report by NC and NSC. .</li> <li>• Annual Country Programme Strategy Review by GEF/UNDP</li> </ul>

	RAMSAR sites (LPMUR and Mesorado Wetlands)	<p>project areas.</p> <ul style="list-style-type: none"> <li>• Climate smart community-based mangrove management practice in RAMSAR sites for providing direct benefits to local communities while at the same time efficient in carbon sequestration.</li> <li>• Sustainable biodiversity management practices supported within the landscape/seascape.</li> </ul>	<p>ries (gender and households) practicing organic agriculture and involved in agroecologic farming practices.</p> <ul style="list-style-type: none"> <li>• Number ha of mangroves under sustainable management</li> <li>• Number of individuals/households benefiting from mangrove resources</li> <li>• Number of farmers practicing climate smart agriculture</li> <li>• Number of</li> </ul>	<ul style="list-style-type: none"> <li>• A review of socio-ecological resilience indicators for production landscapes</li> </ul>
--	--	---	--	--

			communities involved in sustainable biodiversity management practices	
SGP OP6 Immediate Objective 3 Promote the demonstration, development and transfer of low carbon technologies at the community level	<ul style="list-style-type: none"> <li>To harmonize environmental-related national policies with the aim to ensure separate oversight responsibilities and stakeholder consensus of sector governance limitation in managing natural resources in Liberia</li> </ul>	<ul style="list-style-type: none"> <li>Review existing sector policies in Liberia</li> <li>Mainstream climate change mitigation and adaptation into national policies and programmes; Build national stakeholders' consensus on separate sector governance responsibilities and develop a harmonized document</li> <li>Create awareness on climate change impacts, mitigation and adaptation at the decision-making and community levels.</li> </ul>	<ul style="list-style-type: none"> <li>Number of copies of harmonized national policy produced.</li> <li>Number of institutions/ organizations received copies of the harmonized policy</li> </ul>	<ul style="list-style-type: none"> <li>Annual Monitoring Report (AMR).</li> <li>Annual Country Programme Strategy Review</li> <li>Consultant(s) final reports</li> </ul>



<p>SGP OP6 Immediate Objective 4</p> <p>Promote and support energy efficient, low carbon transport at the community level</p>	<ul style="list-style-type: none"> <li>To establish at least one weather station on each project site for gathering metrological data locally.</li> <li>To establish at least one national metrological station</li> </ul>	<ul style="list-style-type: none"> <li>Set up weather data collection system in prioritized project landscape / seascape</li> <li>Set up a or collaborate in the management of an existing National Metrological Stations (NMS) in Liberia.</li> <li>Mainstreaming climate change mitigation and adaptation in biodiversity conservation and livelihood activities at the community level.</li> </ul>	<ul style="list-style-type: none"> <li>Number and type of weather stations set up.</li> <li>Volume and types of weather data collected monthly</li> <li>Number of persons trained to monitor the weather stations</li> <li>Names and number of persons/institutions/projects benefiting from the weather stations</li> </ul>	<ul style="list-style-type: none"> <li>SGP grantees quarterly reports</li> <li>GEF annual monitoring report</li> <li>annual Country Programme Strategy Review</li> <li>SGP Grantees final project reports.</li> </ul>
<p>SGP OP6 Immediate Objective 5</p> <p>Support the conservation and enhancement of carbon stocks through sustainable management</p>	<p>To mainstreaming REDD+ issues in national development with emphasis on land use;</p> <p>capacity building on mainstreaming</p>	<ul style="list-style-type: none"> <li>Engage local communities in selected landscape and seascape sites to carry out community-led forest management</li> <li>Build the capacities of at least 5</li> </ul>	<ul style="list-style-type: none"> <li>Number of communities in LPMUR actively engaged in community forest management</li> <li>Number</li> </ul>	<ul style="list-style-type: none"> <li>Project quarterly report by Grantees.</li> <li>Field monitoring report by NC and NSC.</li> <li>Annual Monitoring Report by NC and NSC. .</li> <li>Annual Country Programme</li> </ul>

and climate proofing of land use, land use change and forestry	biodiversity conservation at the community level.	<p>community forest management bodies in LPMUR</p> <ul style="list-style-type: none"> <li>• Assist in strengthening the capacities of community forest management bodies in ENNR</li> <li>• Build the resilience of local communities to withstand the impacts of climate change</li> </ul>	<p>of community forest management bodies in ENNR capable of efficiently performing forest management activities</p> <ul style="list-style-type: none"> <li>• Number of households at each project site adapting climate change resilience practices in their livelihood activities.</li> </ul>	<p>Strategy Review by GEF/UNDP</p> <ul style="list-style-type: none"> <li>• A review of socio-ecological resilience indicators for production landscapes</li> </ul>
SGP OP6 Immediate Objective 6 Maintain or improve flow of agro-ecosystem and forest ecosystem services to sustain livelihoods of local communities	To mainstream National food security issues in climate change mitigation programmes at national level;	<ul style="list-style-type: none"> <li>• Undertake sustainable livelihood initiatives in landscape and seascape sites ensuring that food security is sustained.</li> <li>• Develop and introduce a module(s) for post-harvest processing, storage, marketing linkages for</li> </ul>	<ul style="list-style-type: none"> <li>• Type and number of sustainable livelihood initiatives</li> <li>• Number of farmers (gender and households) engaged in what type of livelihood initiatives</li> </ul>	<ul style="list-style-type: none"> <li>• Project quarterly report by Grantees.</li> <li>• Field monitoring report by NC and NSC.</li> <li>• Annual Monitoring Report by NC and NSC.</li> <li>• Annual Country Programme Strategy Review by GEF/UNDP</li> <li>• A review of</li> </ul>

		<p>food produce ensuring value additions.</p> <ul style="list-style-type: none"> <li>• Build capacity of farmers in the application of the module(s)</li> </ul>	<ul style="list-style-type: none"> <li>• Types of module developed and introduced</li> <li>• Number of people (gender and household s) trained in applying the module(s)</li> <li>• Number of people (gender and household s) applying the modules</li> <li>• Number and location of communities where module application is effective</li> </ul>	<p>socio-ecological resilience indicators for production landscapes</p>
--	--	---	---	---

<p>SGP OP6 Immediate Objective 7:</p> <p>Reduce pressures at community level from competing land uses in the wider landscapes</p>	<p>To review the existing land tenure and policy of Liberia and mainstream the policy into land uses at the community level</p>	<ul style="list-style-type: none"> <li>• Conduct baseline assessment of project communities to identify competing land use pressures</li> <li>• Develop and document strategic approaches to reduce competing land use pressures at the community level</li> <li>• Set up a community-based land-use management body at project sites</li> <li>• Build the capacity of the community-based land-use management body</li> </ul>	<ul style="list-style-type: none"> <li>• Degree of change in competing land uses</li> <li>• Number of community-based land-use management bodies organized</li> </ul>	<ul style="list-style-type: none"> <li>• Report on competing land use baseline assessment</li> <li>• Project quarterly report by Grantees.</li> <li>• Field monitoring report by NC and NSC.</li> <li>• Annual Monitoring Report by NC and NSC. .</li> </ul>
<p>SGP OP6 Immediate Objective 8:</p> <p>Support trans-boundary water body management with community-based initiatives</p>	<p>To develop a national policy on trans-boundary water bodies</p>	<ul style="list-style-type: none"> <li>• Conduct national stakeholders consultations on the development of trans-boundary water bodies policy for Liberia</li> <li>• Assist or influence the legislation of a</li> </ul>	<ul style="list-style-type: none"> <li>• Number of national stakeholders consultations conducted</li> <li>• Legal instruments on trans-boundary water</li> </ul>	<ul style="list-style-type: none"> <li>• Report on national stake holders consultation</li> <li>• Number of copies of legal instruments (s) circulated</li> <li>• Project quarterly report by Grantees.</li> <li>• Field monitoring report by NC</li> </ul>

		<p>national trans-boundary waters instrument</p> <ul style="list-style-type: none"> <li>• Develop a module for trans-boundary water body management</li> <li>• Pilot trans-boundary water body management at the landscape and seascape levels.</li> </ul>	<p>bodies</p> <ul style="list-style-type: none"> <li>• Number of Trans-boundary water management module(s)</li> <li>• Number and location of pilots on management of trans-boundary waters</li> </ul>	<p>and NSC.</p> <ul style="list-style-type: none"> <li>• Annual Monitoring Report by NC and NSC.</li> </ul>
<p><b>SGP OP6 Immediate Objective 9:</b></p> <p>Promote and support phase out of POPs and hazardous chemicals of global concern at community level</p>	<p>To support phase out of POPs and pesticides in urban centers and industrial areas in Liberia</p>	<ul style="list-style-type: none"> <li>• Conduct inventory of POPs and pesticides in urban centers and industrial areas</li> <li>• Conduct a stakeholders validation workshop on the inventory report</li> <li>• Collaborate with the Environmental Protection Agency (EPA) of Liberia to monitor the presence of the identified and</li> </ul>	<p>R</p> <ul style="list-style-type: none"> <li>• <i>Types and number of POPs and hazardous chemicals identified and confirmed in the target communities</i></li> <li>• Identified impacts of the chemicals in the target communities</li> <li>• Number of copies</li> </ul>	<ul style="list-style-type: none"> <li>• A report on the inventory of the POPs and other hazardous chemicals</li> <li>• A report on stakeholder validation workshop</li> <li>• Project quarterly report by Grantees.</li> <li>• Field monitoring report by NC and NSC.</li> <li>• Annual Monitoring Report by NC and NSC.</li> </ul>

		confirmed POPS and hazardous chemicals in the target communities.	of the inventory report	
<p><b>SGP OP6 Immediate Objective 10:</b></p> <p>Enhance and strengthen capacities of CSOs ( particularly community-based organizations and those of indigenous people) to engage consultative processes and apply knowledge management to ensure adequate information flow, implement conservation guidelines, and monitor and evaluate</p>	<p>To establish knowledge management framework which links SGP grantees, target project communities and stakeholders</p>	<ul style="list-style-type: none"> <li>• Conduct survey of knowledge management systems in Liberia, particularly in project communities but also on the national level if feasible and possible.</li> <li>• Design a standard knowledge management process for SGP grantees and other stakeholders in a national stakeholders forum</li> <li>• Follow up on the application of the knowledge management and consultative processes</li> </ul>	<ul style="list-style-type: none"> <li>• Types of knowledge management system existing nationally.</li> <li>• A documentary design of knowledge system and processes.</li> <li>• Reports on effective consultative processes in SGP grantees network and between Grantees network, project communit</li> </ul>	<ul style="list-style-type: none"> <li>• Knowledge management survey report</li> <li>• Results of the national stakeholder forum</li> <li>• Report by Grantees.</li> <li>• Field monitoring report by NC and NSC.</li> <li>• Annual Monitoring Report by NC and NSC.</li> </ul>



environmental impacts and trends		amongst Grantees and between grantees, communities and other stakeholders	ies and other key stakeholders.	
<b>Cross Cutting issues:</b> Poverty reduction, livelihoods and gender	To mainstream Government Agenda for Transformation into biodiversity conservation and livelihood management at the community level	Conduct baseline assessment of livelihood interventions at the landscape and seascape levels Support local level interventions to ensure sustainable livelihoods Mainstream gender into livelihood intervention at community level initiatives	<ul style="list-style-type: none"> <li>Changes in livelihood situation at the community level</li> <li>Impacts of the changes in the socio-economic status of landscape and seascape communities</li> </ul>	<ul style="list-style-type: none"> <li>Project quarterly report by Grantees.</li> <li>Field monitoring report by NC and NSC.</li> <li>Annual Monitoring Report by NC and NSC. .</li> <li>Annual Country Programme Strategy Review by GEF/UNDP</li> <li>A review of socio-ecological status indicators for production landscape and seascape</li> </ul>
GEF6 allocates US\$400,000 for environment, livelihood and poverty reduction; seventy percent of the SGP6 fund for target project sites	To ensure areas of biological significance outside target project sites benefit from the CPS and SGP grants	Support for management of the mangrove ecosystem in Mesorado Wetlands (a Ramsar site) Support livelihood interventions at Sapo National Park Support biodiversity conservation initiatives for the	Thirty percent (30%) of the SGP grant is distributed as follow: Fifteen (15%) goes to Mesorado Wetlands Seven and a half percent (7.5%) goes to Sapo National Park and	<ul style="list-style-type: none"> <li>Project quarterly report by Grantees.</li> <li>Field monitoring report by NC and NSC.</li> <li>Annual Monitoring Report by NC and NSC. .</li> <li>Annual Country Programme Strategy Review</li> </ul>

(ENNR and LPMUR) and 30% for important sites outside the target project sites.		Foya forest block	Seven and a half percent (7.5%) goes to Lofa (Foya forest Presence of SGP Grantees in Mesorodo, Sapo National Park and Foya forest communities.	by GEF/UNDP <ul style="list-style-type: none"> <li>A review of socio-ecological resilience indicators for production landscapes</li> </ul>
--	--	-------------------	---	--

#### 4. Monitoring & Evaluation plan

**Participants also deliberated on the monitoring and evaluation of future projects.** They agreed that the SGP secretariat will be responsible for the coordination of all projects and activities under the CPS and will monitor the implementation through regular reporting by grantees, field visits and peer review workshops. Each grantee will supervise its own work plan, monitor performance, whether by project inputs and outputs or policy measures, and will report on progress and problems at quarterly bases during project coordination meetings either on-line or during project visits. The regular reports will be analyzed and consolidated by the SGP secretariat as a routine function in preparation for annual reports and project reviews. The project and programme level monitoring and evaluation plan as agreed by the participants of the workshop are shown in tables below.

#### Monitoring and Evaluation Plan at Project level

1. MONITORING: PROJECT LEVEL					
No	Monitoring and Evaluation Activity	Purpose	Responsible Parties	Budget Source	Time frame
1.1	Pre-project evaluation and situational analysis	To assess the baseline conditions and capacity of the NGO	NC, NSC, Grantee	SGP Administrative budget line.	At project planning stage and prior to the NSC project approval
1.2	Baseline data collection	To fit it into the socio-ecological production landscape/seascape	Grantee	Grantee co-financing	At project proposal writing.
1.3	Formulation of operational work plan with indicators	To get the beneficiaries involved in the project planning	Grantee	Grantee co-financing	Prior to the requests for disbursement

		and implementation			
1.4	Project progress and financial reporting to coincide with disbursement schedules	To monitor landscape performance indicators and financial management	Grantee, NC, PA and DP	Covered under the SGP contribution (75%) and & co-financing (25%)	Before each disbursement requests
1.5	Project implementation assistance mission and bi-annual stakeholder monitoring and evaluation meetings.	To monitor landscape/seascape performance indicators and ability of Grantee in financial and project management	NC, NSC and DPs	SGP Administrative budget line	Twice a year: Prior to second and last disbursements
1.6	Participatory project monitoring by Peers	To learn from best practice and correct emerging mistakes	Grantee and beneficiaries	Covered under the SGP contribution	Midway of the project implementation
1.7	Project evaluation visit	To assess the project performance and review the landscape/seascape management approaches	NC, NSC & DP	Covered under the SGP contribution	Two weeks before conclusion of the project
1.8	Project final Report	External views on the project performance	External consultant/ Grantee	Covered under the SGP contribution	Following the completion of project activities
1.9	Project case study reports	To selected best practice and prepare case studies for dissemination	NC, NSC, DPs Independent external party	C0-financing	After the completion of project activities and submission of project final report

#### Monitoring and Evaluation Plan at country level programming

2. MONITORING: PPROGRAMME LEVEL					
No	Monitoring and Evaluation Activity	Purpose	Responsible Parties	Budget Source	Time frame

2. MONITORING: PPROGRAMME LEVEL					
No	Monitoring and Evaluation Activity	Purpose	Responsible Parties	Budget Source	Time frame
2.1	Country programme strategy review	Part of adaptive management learning strategy.	NC, NSC, & selected key stakeholders	SGP Administrative budget	Beginning of OP6
2.2	Strategic country portfolio review	To identify best practices and assess the policy implications for national consideration	NSC, NC & UNDP	SGP Administrative budget	Once during the OP6
2.3	NSC Meetings	To discuss technical issues and approve projects based on the country strategy	NC, NSC, UNDP	SGP administrative and operating cost	Variable depending on projects approval cycle and emerging policy issues
2.4	Performance and results assessment (PRA) of NC performance	To assess the performance of the NC and PA	NC, NSC, UNDP	SGP administrative and operating cost	Once per year
2.5	Country programme review for preparation of Annual Country Report	To assess the country programme performance	NC presenting to NSC	SGP administrative and operating cost	Once per year
2.6	National stakeholders review of country programme	To allow the stakeholders to review the performance of the country programme	NC, NSC and Grantees	SGP administrative and operating cost	Once during the OP6
2.7	Annual Country Report (ACR)	Enable efficient reporting to NSC	NC presenting to NSC & UNDP	Covered under country programme operating costs	Once per year in June
	Annual Monitoring Report (AMR) Survey (based on ACR)	Enable efficient reporting to CPMT and GEF; presentation of results to donor	NC submission to UNDP	Covered under country programme operating costs	Once per year in July
	Strategic Country Portfolio Review	Learning; adaptive management for strategic development of	NSC	Covered under country programme operating costs	Once per operational phase

2. MONITORING: PPROGRAMME LEVEL					
No	Monitoring and Evaluation Activity	Purpose	Responsible Parties	Budget Source	Time frame
		Country Programme			
2.8	SGP capacity building and training in GEF thematic focal areas	To build capacities of CSOs in project management and policy dialogue	NC & Grantees	SGP administrative and operating cost	Once every year
2.9	Media encounter and training in reporting in GEF focal Areas	To communicate the best practices of the SGP to the general public.	NC, NSC and Media practitioners	Covered under country programme operating costs	Twice during OP6

## 5. Resource mobilisation plan

### Strategization and Resources Allocation

The participants also agreed on the following for resource mobilization plan. They indicated that lessons learnt during the implementation of OP5 and in line with the goal and objectives of GEF-OP6, the programme will implement 10 projects in the priority areas including the landscape area (ENNR) and seascape area (LPMUR). This figure does not include projects outside the priority areas.

However, projects to be implemented may not be mutually exclusive to the focal areas. Most projects may be cross-cutting or cover multiple focal areas but will be identifiable with the GEF strategic priorities that they are supporting those projects. In addition, the number of projects for areas outside the priority sites will depend on the amount of available fund and the GEF/SGP grants policy. Accordingly, 30% of the OP6 grant for Liberia will be allocated for three areas outside the priority sites. The areas agreed upon and the percentage grant allocations were Mesorado Wetlands (15%), Foya forest (7.5%) and Sapo National Park (7.5%).

The participants also agreed that the following strategies be put in place to expand the impact of the GEF/SGP in Liberia during the OP6:

- Identify income generation and sustainable livelihood issues in target areas and document the information for sharing nationally. This will be done in line with the GEF/SGP focal areas and operational programmes.
- Include capacity building in all projects to ensure technical competence of NGO/SGP communities. One stand alone capacity building project can be implemented to build the capacities of the civil society in project identification, implementation, management, monitoring and evaluation.
- Assess existing and potential partnerships with donors, government and the private sector implemented at country levels.
- Strengthen membership of National Steering Committee (NSC) with additional members (e.g. private sector and representative of Key government institutions).
- Conduct of donors fora at country level to identify potential partners.
- Prepare project portfolios designed to generate additional resources (e.g. micro-credits, blended loans, carbon finance, etc.)

- Intensify resource mobilization efforts particularly in country programmes moving out of dependence on GEF grant funds with dedicated support from SGP CPMT and GEF SGP Steering Committee.




## V. NEXT STEP

NC indicated that the finalization of the CPS for Liberia is the first step in the way forward to the implementation of the OP6. This will be followed by call for proposals and allocation of funds for implementing the accepted proposals. He emphasized that this time the criteria for developing proposals will include greater involvement of the target communities to ensure consideration for their free, prior and informed consent (FPIC). Also all project reports should include important lessons learned that can be replicated to other areas/sites in Liberia. Also, NC advised GEF-SGP grantees to reduce their total dependency on the GEF SGP. They should make effort to identify other donors worldwide, especially for co-funding initiatives.

### Closing Remarks

In closing remarks, the participants commended the GEF SGP for providing them the opportunity to make their input in the Country programme strategy.

## National Consultation Workshop Agenda

   <p><b>NATIONAL STAKEHOLDER WORKSHOP FOR DEVELOPING A COUNTRY PROGRAMME STRATEGY (CPS) FOR LIBERIA</b> Monday, December 14, 2015</p> <p><b>WORKSHOP AGENDA</b></p> <p>Workshop Objectives:</p> <ul style="list-style-type: none"> <li>➤ To present findings from the Landscape/Seascape scoping and baseline assessment conducted in November-December 2015.</li> <li>➤ To prioritize and agree on issues for the UNDP Country Programme Strategy (CPS) for Liberia for the period 2016-2018.</li> </ul>		
ACTIVITY	RESPONSIBLE PERSON/INSTITUTION	TIME
Opening remarks	Jerome Nyenka Assistant Professor, University of Liberia	9:30am
Presentation on the objectives of the UNDP CPS	Samuel Boakai SGP National Coordinator/UNDP	9:30am -10:00am
Presentation on the scoping and baseline assessment process and	Richard S. Sambolah Director/Farmers Associated to	10:00am – 11:00am



## ANNEX 2: Workshop Participants List

### National Consultation Workshop Participants

### Workshop Participants

Country Programme Strategy (CPS) Consensus Building Workshop

**Attendance Sheet**

Workshop venue: CORINA HOTEL

Date: DEC 14, 2015

No.	Name of participant	Institution/Organization	Female/ Male	Location	Email address	Phone #	Signature	Date
1	Jeanetta K. Johnson	Sustainable Liberia Yes Action	F	Sinkor, metadi	JKoyah@yahoo.com	088513811 077751344	<i>[Signature]</i>	Dec 14, 2015
2	Woto Kariwa	Zortarpa ENNH	m	Zortarpa		0770493057	<i>[Signature]</i>	Dec 14
3	Miatla W. Gbaling	WOCAP	F	Mecca, Suchu	wocap-ugod@yahoo.com	0880655795	<i>[Signature]</i>	Dec 14/15
4	Ruth M. Nelson	WIISD	F	ENNR	enrinal@yahoo.com	0886511580	<i>[Signature]</i>	12/14/15
5	Eli G. Gbure	COSDO	F	Nimba	cosdo34@yahoo.com	0886510833	<i>[Signature]</i>	12/14/15
6	Hawa M. Korku	WIDE	F	Alimba	Korku.Hawa@gmail.com	07768551104 0886460003	<i>[Signature]</i>	12/14/15
7	Momo Senuwe	T.C. F.M.C.	M	7050r CARP M.T.		08866069048	<i>[Signature]</i>	12/14/15
8	Samuel B. B. B.	UNDP	M	Monrovia	Samuel.B.B.@gmail.com	0886510833	<i>[Signature]</i>	12/14/15