



Jaguar-People Coexistence



Cows grazing beside a forest Protected Area.

A successful experience

Historical situation

In a place called Tamanduá, at Misiones province, Argentina, the forest has been replaced by fields for livestock production. The large number of calves represented a range of easy prey to jaguars that has always lived there. Naturally, the American top predator began to feed them and farmers, as retaliation - and in the absence of other alternatives- historically killed them.

This led -together with other factors- to which the population of this feline is currently Critically Endangered.



Resident jaguar in an area of high livestock production.

Camera trap photo.

Jaguar or Yaguareté
Panthera onca

Population in Argentina: less than 250 wild individuals.

Status: Critically Endangered.

Red Yaguareté / Jaguar Network

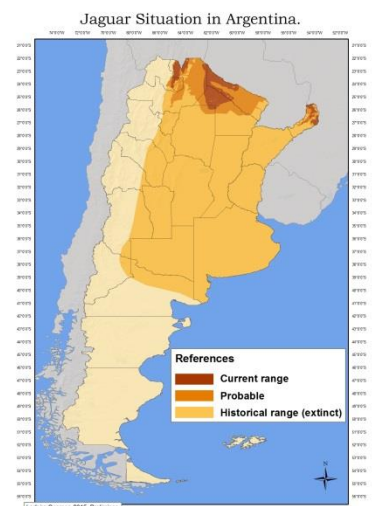
Mission: To Save the jaguar from extinction in Argentina.

Vision: Everyone can do something to achieve the mission.

More information:
www.RedYaguarete.org.ar
info@redyaguarete.org.ar

Social networks:
[@RedYaguarete](https://twitter.com/RedYaguarete)
[@JaguarNetwork1](https://twitter.com/JaguarNetwork1)

FB/TheJaguarNetwork

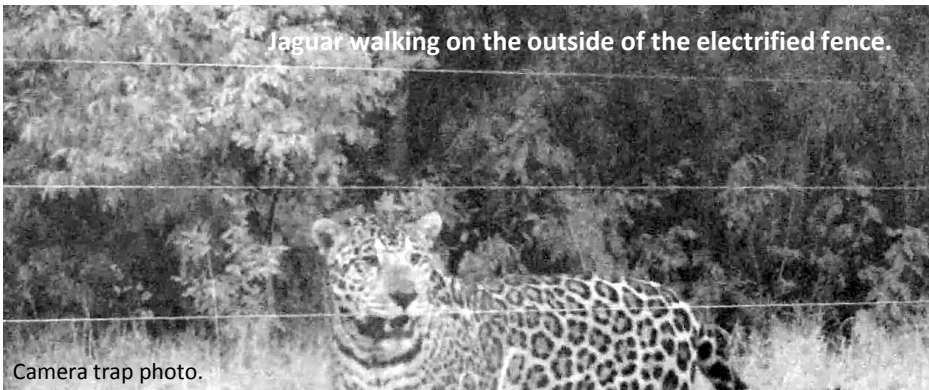




Electrified fence between livestock property and Natural Protected Area.

Proposed solution

We looked to seriously difficult jaguar attacks on calves by implementing electrified fences, to thereby alleviate the usual response of the affected farmers to eliminate the big cat.



Jaguar walking on the outside of the electrified fence.

Camera trap photo.

Results

During the two years we implemented the system, in the cattle property where it was developed, attacks decreased from twelve (12) to zero (0), while in neighboring fields (without preventative measures) attacks increased or maintained historical levels.

Important next steps

- Strengthen successful experiences.
- Expand the experience to more cattle properties.
- Train future farmers in this type of management.
- Implement economic compensation to responsible cattle farmers.

Technical data

AC electrified wires from 4,000 to 6,000 volts.

Sustainable electricity supply by a solar panel.

Keep inside the electrified area the vulnerable individuals:
calves up to 300 kg, pregnant and sick animals.

Biweekly monitoring visits and support to the livestock producer.

In partnership with



Support



Financing

